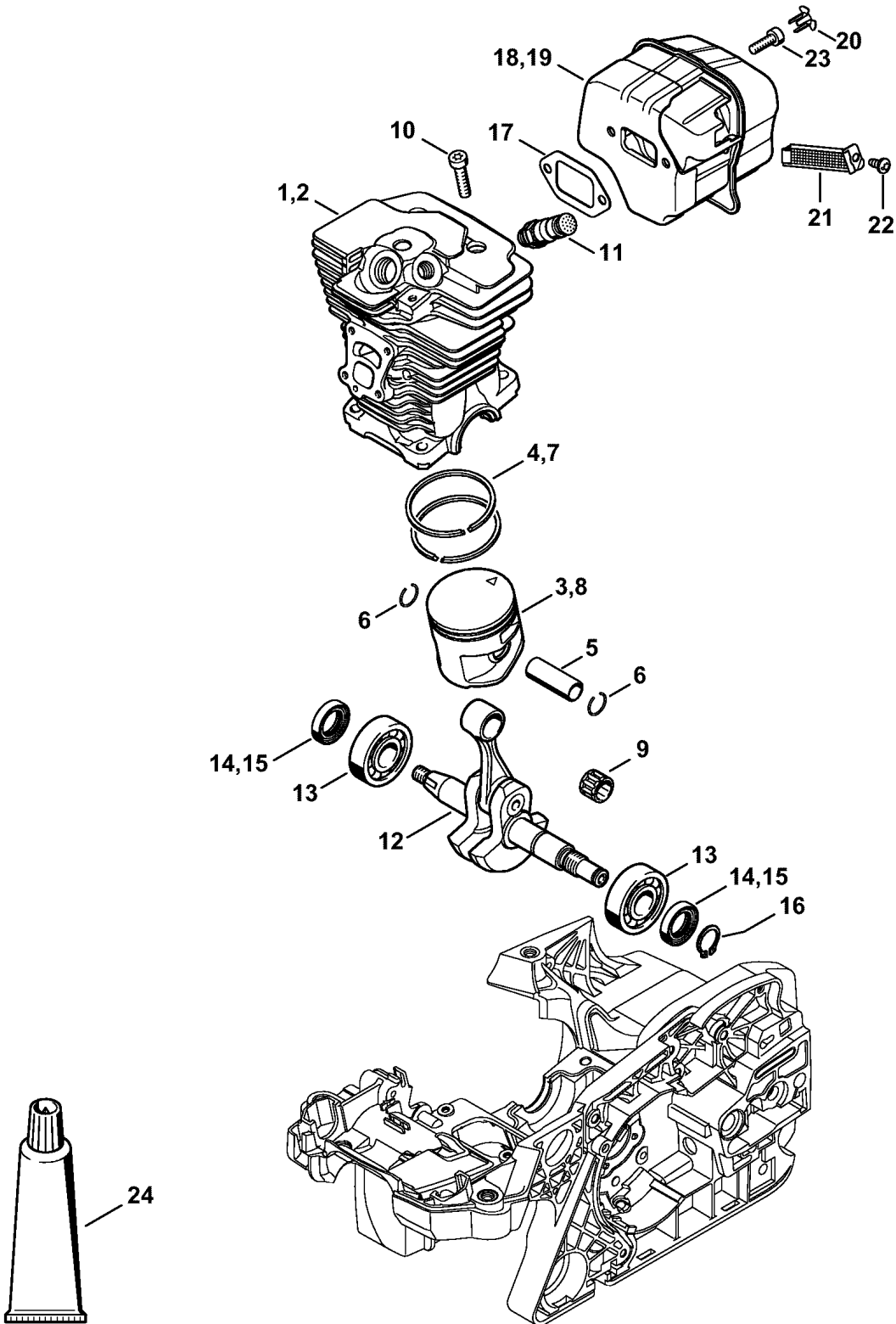


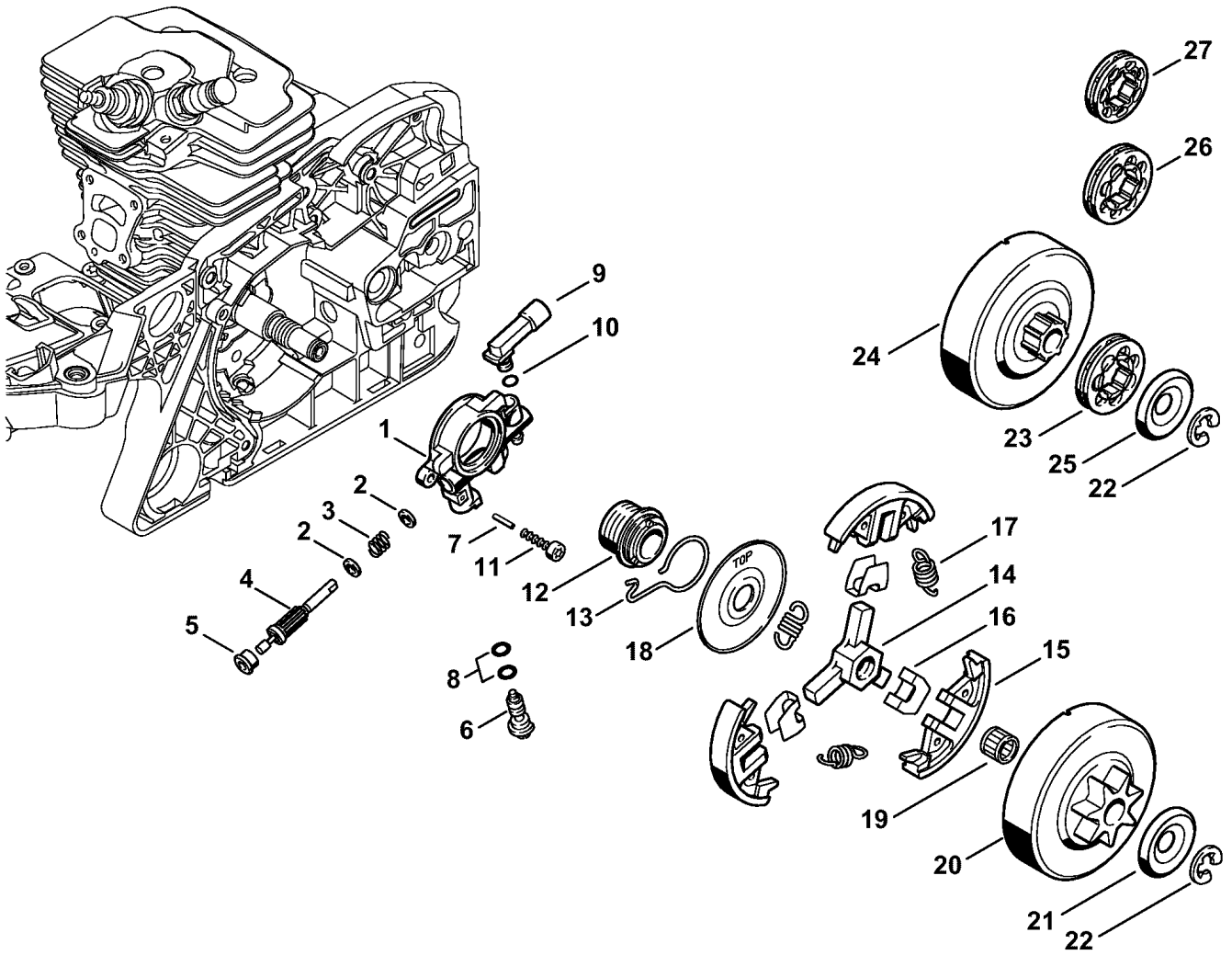
Reference	Item number	Qty	Description
1	1140 020 3000	1	Engine housing □ 2 - 12
2	1128 640 9100	1	Valve
3	0000 974 1200	1	Notched pin 2.6x8
4	1123 162 5200	1	Pin
5	1123 162 5205	1	Pin
6	1121 162 5200	1	Pin
7	1120 162 5200	1	Pin
8	9645 945 7444	1	O-ring 4x1.5
9	0000 350 3500	1	Pickup body
10	1140 647 9401	1	Hose
11	0000 664 2407	1	Collar screw M8
12	0000 664 2404	1	Collar screw M8
13	0000 664 2411	1	Collar screw D9/M8 (B)
14	0000 350 0525	1	Filler cap □ 15
15	9645 948 7734	1	O-ring 25x3.5
16	1133 791 5900	1	Stop buffer
17	1140 140 7800	1	Pre-separator
18	9074 477 2995	1	Pan head self-tapping screw IS-P4x12
	1127 007 1003	1	Spur gear / chain adjusting screw kit □ 19, 20
19		1	Spur gear (D)
20		1	Adjusting screw (D)
21	1127 640 1900	1	Tensioner slide
22	1123 664 1400	1	Thrust pad
23	1127 664 2200	1	Cover
24	9074 478 3005	1	Pan head self-tapping screw IS-P4x14

(1) MS 311, (2) MS 311-Z, (3) MS 391, (4) MS 391-Z



Reference	Item number	Qty	Description
1	1140 020 1201	1	Cylinder with piston Ø 47 mm (1,2) □ 3 - 6
2	1140 020 1202	1	Cylinder with piston Ø 49 mm (3,4) □ 5 - 8
3	1140 030 2002	1	Piston Ø 47 mm (1,2) □ 4 - 6
4	1140 034 3000	2	Piston ring Ø 47x1.2 mm (1,2)
5	1122 034 1500	1	Piston pin 12x8x33
6	9463 650 1200	2	Snap ring 12x1
7	1140 034 3001	2	Piston ring Ø 49x1.2 mm (3,4)
8	1140 030 2003	1	Piston Ø 49 mm (3,4) □ 5 - 7
9	9512 003 3061	1	Needle cage 12x15x15
10	1140 022 9500	4	Spline screw IS-M6x25
11	1135 020 9400	1	Decompression valve
12	1140 030 0401	1	Crankshaft (25.2005)
13	9523 003 4301	2	Grooved ball bearing 15x38x11
14	9639 003 1585	2	Oil seal 15x25x5
15	9638 003 1581	2	Oil seal 15x25x5 (B) (24.96),(39.90)
16	9455 621 1520	1	Circlip 15x1
17	1140 149 0600	1	Muffler gasket
18	1140 140 0653	1	Muffler (1,3) □ 20
19	1140 140 0651	1	Muffler (2,4) USDA Cert. I.D. 1140/01 USA □ 20 - 22
20	1135 145 9002	2	Plug
21	1140 140 8100	1	spark arresting screen (2,4)
22	9039 448 0656	1	Self-tapping screw M4x9.6 (2,4)
23	9022 341 0980	2	Spline screw IS-M5x16
24	0783 830 2000	1	Tube of sealant Dirko HT red (B)

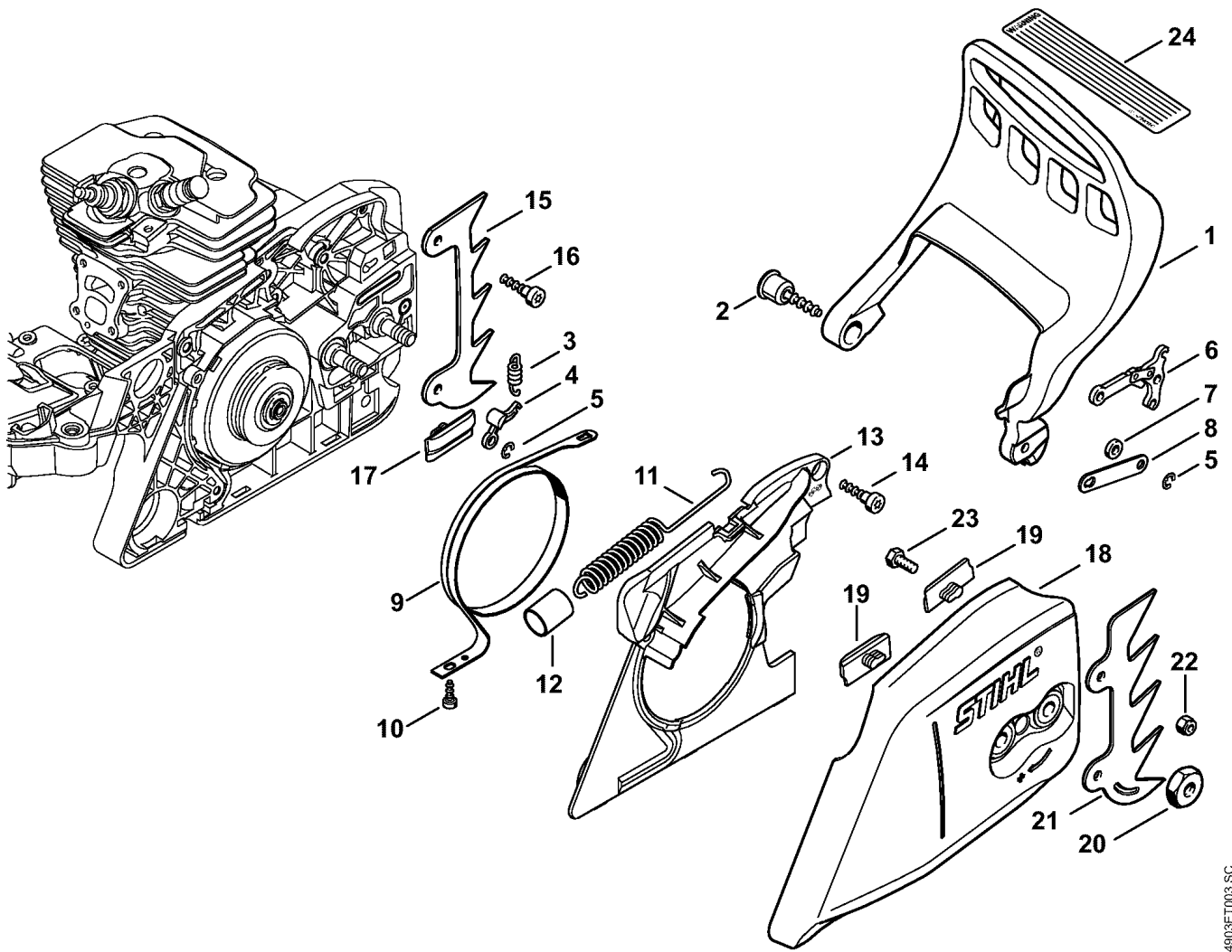
(1) MS 311, (2) MS 311-Z, (3) MS 391, (4) MS 391-Z



4903ET002 SC

Reference	Item number	Qty	Description
1	1127 640 3204	1	Oil pump □ 2 - 8
2	0000 958 0408	2	Washer
3	0000 997 0615	1	Compression spring
4	1127 647 0602	1	Pump piston 0.88 mm
5	1121 641 9400	1	Bearing bushing
6	1128 647 4806	1	Control bolt
7	9380 620 1090	1	Roll pin 2x10
8	9646 945 0160	2	O-ring 4x2
9	1127 640 9200	1	Elbow connector □ 10
10	9645 945 7444	1	O-ring 4x1.5
11	9075 478 3018	2	Pan head self-tapping screw IS-D4x18
12	1125 640 7110	1	Worm □ 13
13	1125 647 2400	1	Spring
	1140 160 2001	1	Clutch □ 14 - 17
14	1127 162 3200	1	Carrier
15	1125 162 0802	3	Clutch shoe
16	1127 162 3000	3	Retainer
17	0000 997 0911	3	Tension spring
18	1127 162 1000	1	Cover washer
19	9512 933 2260	1	Needle cage 10x13x10
20	1140 640 2000	1	Chain sprocket 3/8" 7T
21	0000 958 1021	1	Washer Ø 33 mm
22	9460 624 0801	1	E-clip 8x1.3
	1125 007 1002	1	Rim sprocket kit 3/8" 7T (B) □ 22 - 25
23	0000 642 1231	1	Rim sprocket 3/8" 7T (B)
24		1	Clutch drum (B,D)
25	0000 958 1022	1	Washer Ø 27 mm (B)
	1125 007 1000	1	Rim sprocket kit 0.325" 8T (B) □ 22, 24 - 26
26	0000 642 1234	1	Rim sprocket 0.325" 8T (B)
	1125 007 1001	1	Rim sprocket kit 0.325" 7T (B) □ 22, 24, 25, 27
27	0000 642 1236	1	Rim sprocket 0.325" 7T (B)

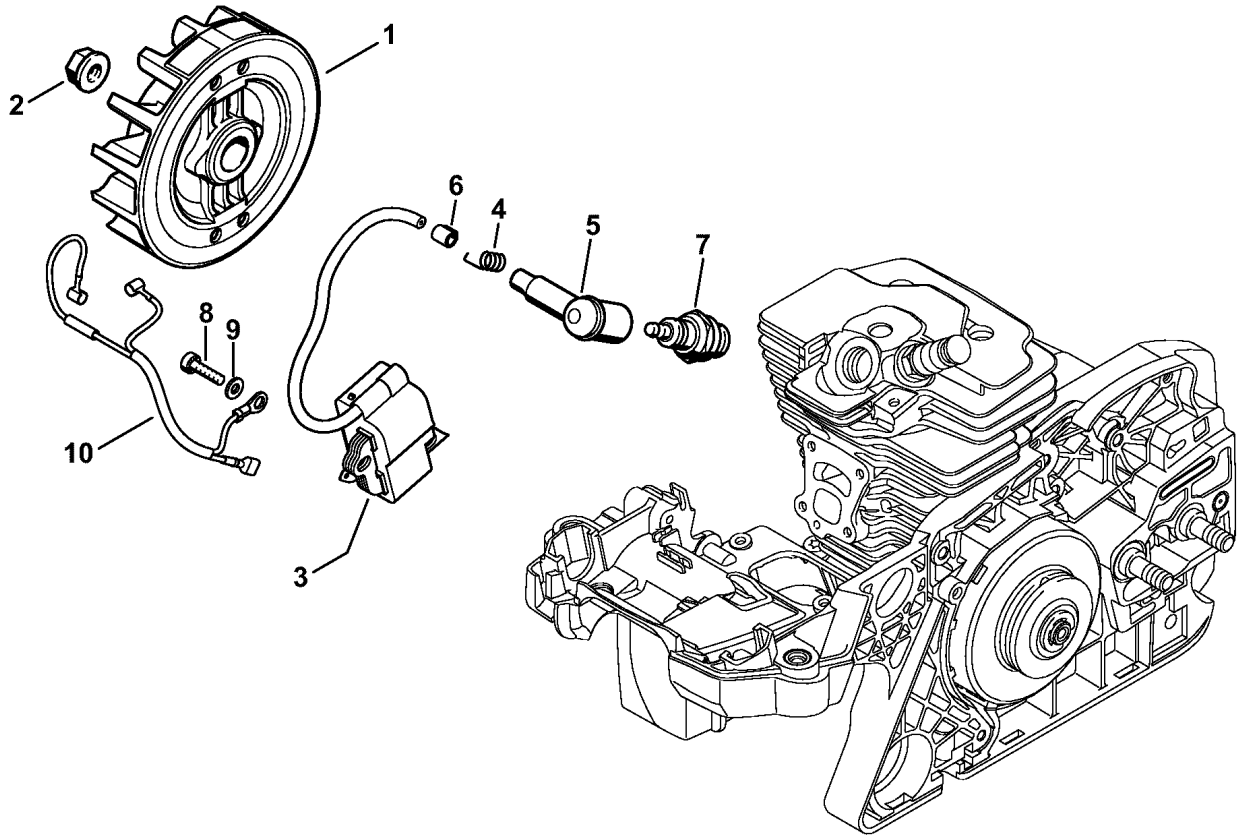
(1) MS 311, (2) MS 311-Z, (3) MS 391, (4) MS 391-Z



4903ET003 SC

Reference	Item number	Qty	Description
1	1140 792 9101	1	Hand guard
2	1140 790 6101	1	Screw assy.
3	0000 997 0628	1	Spring
4	1121 162 5010	1	Lever
5	9460 624 0400	2	E-clip 4
6	1128 160 5000	1	Lever
7	0000 958 0521	1	Washer
8	1140 162 5800	1	Strap
9	1135 160 5400	1	Brake band
10	9074 477 2995	1	Pan head self-tapping screw IS-P4x12
11	1125 160 5501	1	Tension spring □ 12
12	1125 162 8001	1	Hose 32 mm / 1 3/16"
13	1140 021 1101	1	Cover
14	9074 477 4130	2	Pan head self-tapping screw IS-P5x16
15	1127 664 0500	1	Bumper spike
16	9074 477 4130	2	Pan head self-tapping screw IS-P5x16
17	1121 648 6610	2	Bumper strip
18	1140 640 1700	1	Chain sprocket cover □ 19
19	1121 648 6610	2	Bumper strip
20	0000 955 0801	2	Hexagon nut M8
21	0000 660 0850	1	Bumper spike (B) □ 22, 23
22	9214 320 0700	2	Lock nut M5 (B)
23	9008 319 0960	2	Hexagon head screw M5x12 (B)
24	0000 967 3630	1	Instruction label USA

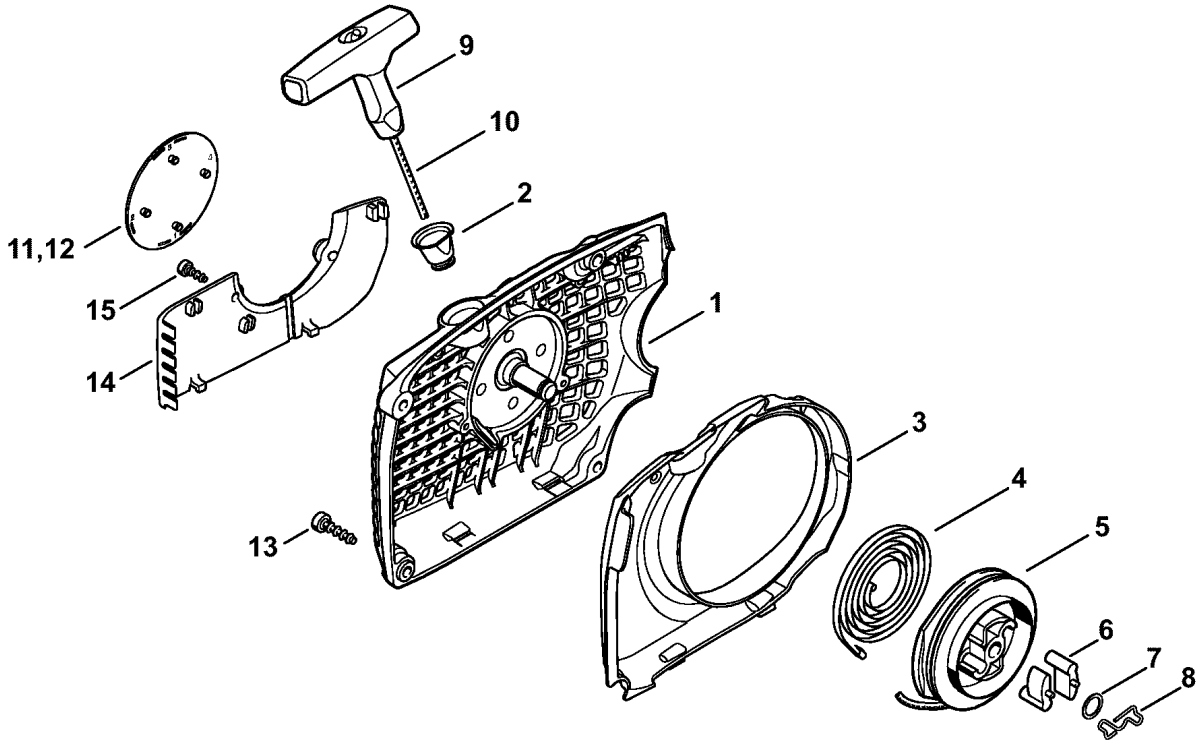
(1) MS 311, (2) MS 311-Z, (3) MS 391, (4) MS 391-Z



4903ET004 SC

Reference	Item number	Qty	Description
1	1140 400 1200	1	Flywheel (25.2005)
2	0000 955 0802	2	Collar nut M8x1
3	1140 400 1303	1	Ignition module □ 4 - 6
4	0000 998 0603	1	Torsion spring
5	1106 405 1000	1	Spark plug boot
6	0000 435 8400	1	Sleeve
7	0000 400 7000	1	Spark plug NGK BPMR7A
7	1110 400 7005	1	Spark plug Bosch WSR 6 F
8	9075 478 3018	2	Pan head self-tapping screw IS-D4x18
9	9291 021 0100	2	Washer 4.3
10	1140 440 3003	1	Wiring harness

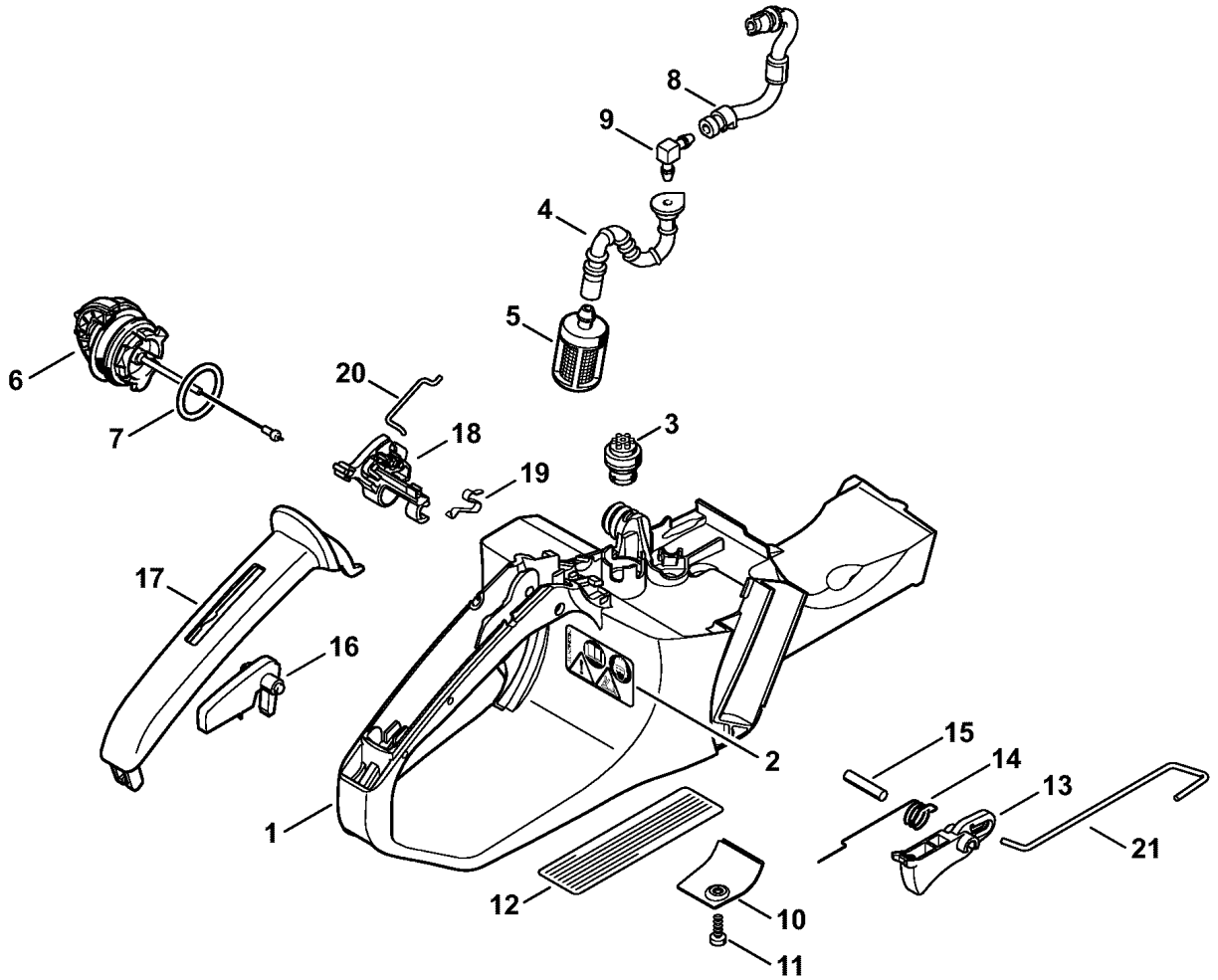
(1) MS 311, (2) MS 311-Z, (3) MS 391, (4) MS 391-Z



4903ET007 SC

Reference	Item number	Qty	Description
	1140 080 2104	1	Fan housing with rewind starter □ 1 - 12
1	1140 080 1803	1	Fan housing □ 2
2	1110 084 9102	1	Bushing
3	1140 084 7801	1	Segment
4	1135 190 0600	1	Rewind spring
5	1128 195 0400	1	Rope rotor
6	1125 195 7200	2	Pawl
7	0000 958 0923	1	Washer
8	1128 195 3500	1	Spring
9	1121 195 3400	1	Starter grip
10	1113 195 8200	1	Starter rope Ø 3.5x960 mm
	0000 930 2203	1	Starter rope Ø 3.5 mm x 30.5 m (A,B)
11	1140 967 1501	1	Model plate MS 311 (1,2)
12	1140 967 1502	1	Model plate MS 391 (3,4)
13	9074 477 4135	3	Pan head self-tapping screw IS-P5x20
14	1140 007 1003	1	Cover plate kit (B) □ 15
15	9074 477 2995	2	Pan head self-tapping screw IS-P4x12 (B)

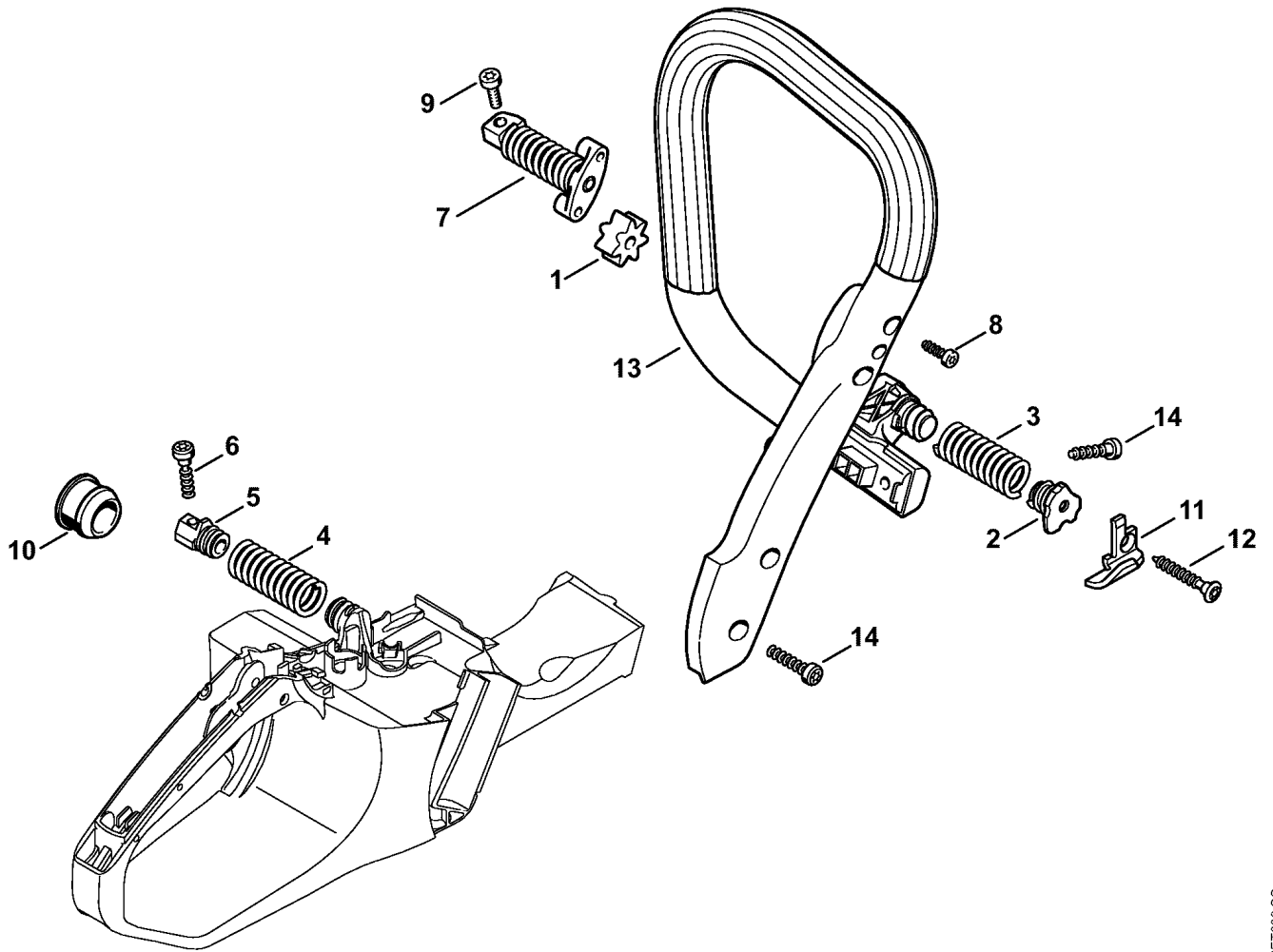
(1) MS 311, (2) MS 311-Z, (3) MS 391, (4) MS 391-Z



4903ET005 SC

Reference	Item number	Qty	Description
1	1140 350 0804	1	Tank housing □ 2 - 7
2	0000 967 3662	1	Warning pictogram MS
3	0000 350 5800	1	Tank vent
4	1140 358 7704	1	Hose
5	0000 350 3504	1	Pickup body
6	0000 350 0525	1	Filler cap □ 7
7	9645 948 7734	1	O-ring 25x3.5
8	1140 350 2700	1	Fuel hose
9	4224 122 3900	1	Elbow connector
10	1140 656 1500	1	Guard (B)
11	9074 478 2970	1	Pan head self-tapping screw IS-P4x10 (B)
12	0000 967 3500	1	Instruction label (2,4) USA
13	1140 182 1000	1	Throttle trigger
14	1117 182 4500	1	Torsion spring
15	9371 470 2640	1	Cylindrical pin 5x24
16	1138 182 0800	1	Trigger interlock
17	1140 791 0601	1	Handle molding
18	1140 182 0900	1	Switch shaft
19	1140 442 1600	1	Contact spring
20	1140 185 1900	1	Choke rod
21	1140 182 1500	1	Throttle rod

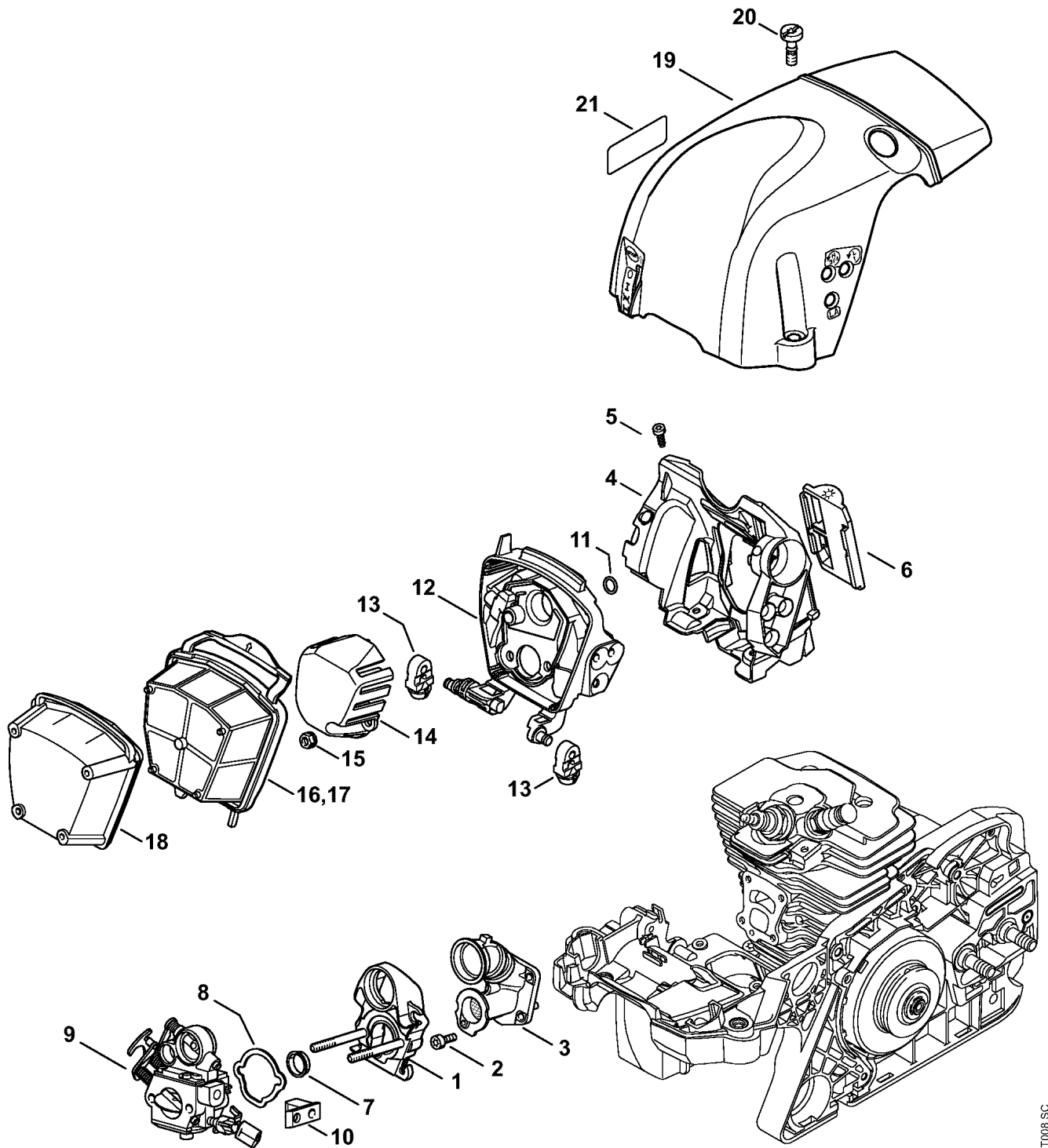
(1) MS 311, (2) MS 311-Z, (3) MS 391, (4) MS 391-Z



4903ET006 SC

Reference	Item number	Qty	Description
1	1140 791 2800	1	Stop buffer
2	1140 792 2900	1	Bearing plug
3	1140 791 3100	1	Spring
4	1140 791 3102	1	Spring
5	1140 792 2903	1	Bearing plug
6	9074 478 4475	1	Pan head self-tapping screw IS-P6x21.5
7	1140 790 8300	1	AV-Spring
8	9074 477 4130	2	Pan head self-tapping screw IS-P5x16
9	9022 341 0982	1	Spline screw IS-M5x16
10	1140 791 2801	1	Annular buffer
11	0000 656 7700	1	Chain catcher
12	9074 477 4448	1	Pan head self-tapping screw IS-P6x38
13	1140 791 1700	1	Handlebar
14	9074 478 4545	4	Pan head self-tapping screw IS-P6x26.5

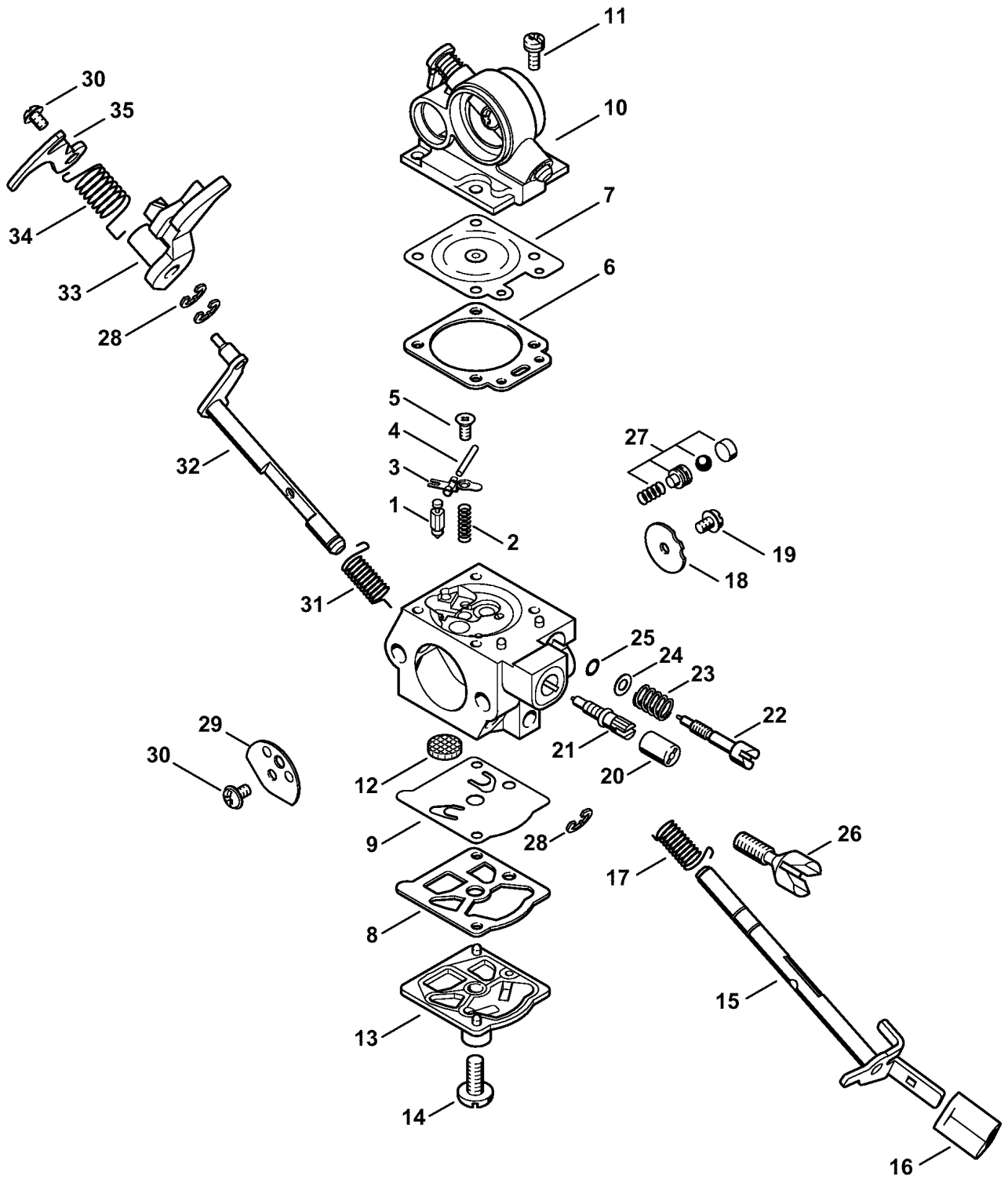
(1) MS 311, (2) MS 311-Z, (3) MS 391, (4) MS 391-Z



4903ET008 SC

Reference	Item number	Qty	Description
1	1140 120 0900	1	Carburetor bracket
2	9022 313 0660	4	Spline screw IS-M4x12
3	1140 140 2500	1	Manifold
4	1140 087 3001	1	Air guide shroud
5	9074 477 2995	2	Pan head self-tapping screw IS-P4x12
6	1140 084 4100	1	Shutter
7	1140 141 1800	1	Sleeve
8	1140 121 8600	1	Washer
9	1140 120 0601	1	Carburetor WTE-9
10	1140 123 7501	1	Grommet
11	9645 945 3094	1	O-ring 9x1.5
12	1140 124 3500	1	Filter housing
13	1140 122 9901	2	Buffer
14	1140 121 6900	1	Baffle
15	9216 261 0700	2	Hexagon nut M5
16	1140 140 4401	1	Air filter, fleece
17	1140 140 4402	1	Air filter PA (B)
18	1140 140 4500	1	Prefilter (B)
19	1140 080 1601	1	Shroud □ 20
20	9022 319 1300	3	Spline screw IS-M6x20
21	0000 967 3749	1	Warning pictogram Filler cap (2,4) USA, CDN

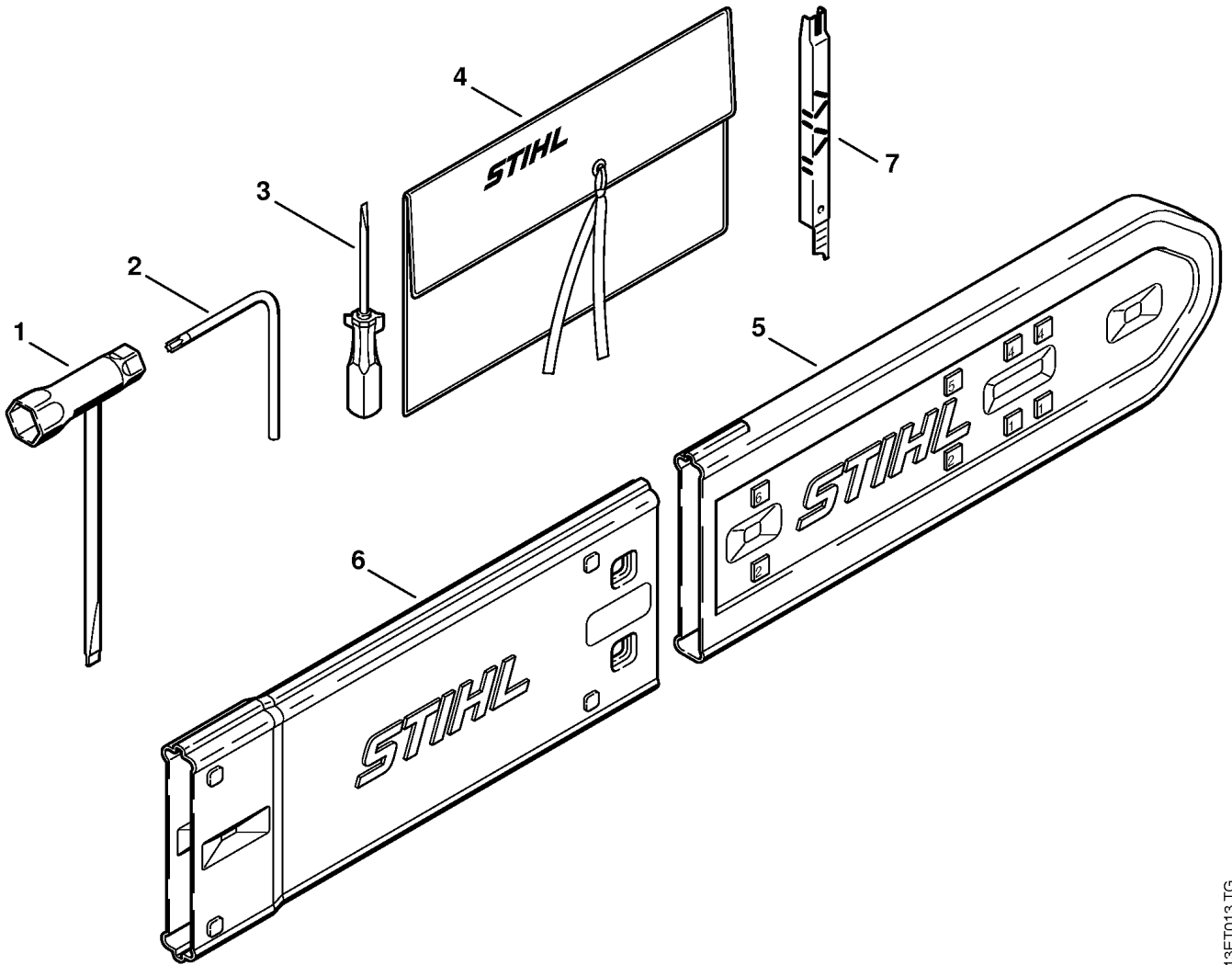
(1) MS 311, (2) MS 311-Z, (3) MS 391, (4) MS 391-Z



0001ET012.SC

Reference	Item number	Qty	Description
	1140 120 0601	1	Carburetor WTE-9 □ 1 - 35
1	4116 121 5100	1	Inlet needle
2	4116 122 3000	1	Spring
3	1121 121 5000	1	Inlet control lever
4	1113 121 9200	1	Spindle
5	1121 122 7103	1	Round head screw
6	4133 129 0901	1	Gasket
7	1121 121 4700	1	Metering diaphragm
8	1120 129 0905	1	Gasket
9	1121 121 4801	1	Pump diaphragm
10	1140 120 0202	1	Air valve housing
11	1121 122 7101	4	Screw
12	1114 121 7800	1	Strainer
13	1140 120 0800	1	End cover
14	1114 122 7100	1	Screw
15	1140 120 7100	1	Throttle shaft with lever □ 16
16	1140 121 2700	1	Cap
17	1140 122 3200	1	Torsion spring
18	1140 121 3300	1	Throttle shutter
19	4224 122 7801	1	Oval head screw
20	4203 121 2700	1	Cap
21	1140 122 6700	1	High speed adjustment screw
22	1140 122 6800	1	Low speed adjustment screw
23	1115 122 3002	1	Spring
24	1111 121 8605	1	Washer
25	4124 122 3600	1	Sealing ring
26	1140 122 6200	1	Idle speed adjustment screw
27	1140 120 9700	1	Pump piston kit
28	1117 122 9000	3	E-clip
29	1140 121 2900	1	Choke shutter
30	1121 122 7102	2	Round head screw
31	1140 122 3201	1	Torsion spring
32	1140 120 7200	1	Choke shaft with lever
33	1140 121 3500	1	Throttle lever
34	1140 122 3202	1	Torsion spring
35	1140 121 3502	1	Throttle lever
	1140 007 1004	1	Set of carburetor parts □ 6 - 9

(1) MS 311, (2) MS 311-Z, (3) MS 391, (4) MS 391-Z



213ET013 TG

Reference	Item number	Qty	Description
	1121 890 1400	1	Tool kit (B) □ 1 - 4
1	1129 890 3401	1	Combination wrench
2	0812 370 1000	1	Screwdriver T27x120x70 (B)
3	0000 890 2300	1	Screwdriver
4	0000 891 0801	1	Tool roll (B)
5	0000 792 9129	1	Chain scabbard
6	0000 792 9132	1	Chain scabbard extension up to 63 cm (B)
7	1110 893 4000	1	Filing gauge (B)

(1) MS 311, (2) MS 311-Z, (3) MS 391, (4) MS 391-Z