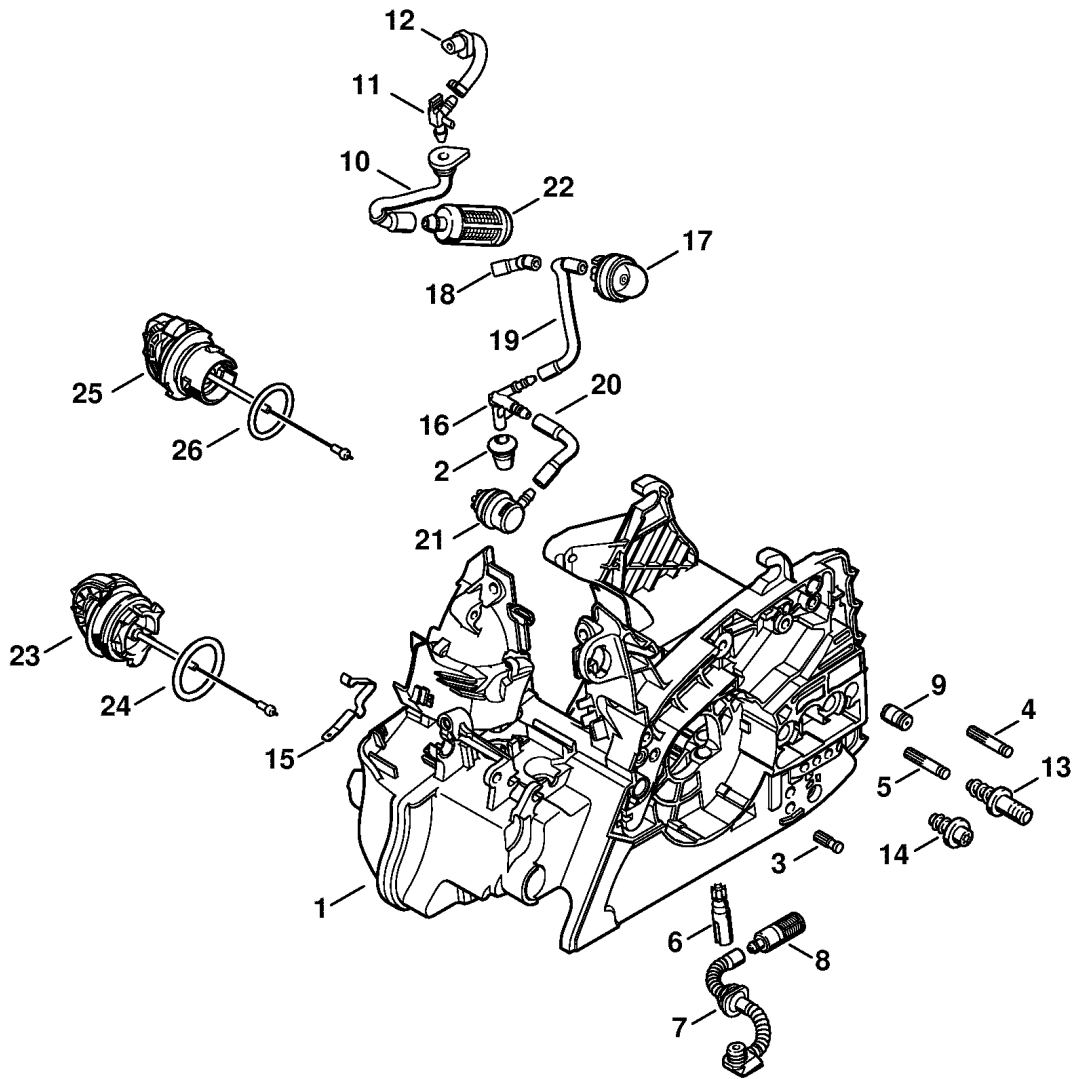


533ET009 SC

| Reference | Item number | Qty | Description |
|-----------|---------------|-----|-----------------------------------|
| 1 | 1139 020 3000 | 1 | Engine housing (1,3) 2 - 18 |
| 2 | 0000 989 0608 | 1 | Grommet (1,3) |
| 3 | 1120 162 5200 | 1 | Pin (1,3) |
| 4 | 1123 162 5200 | 1 | Pin (1,3) |
| 5 | 1123 162 5205 | 1 | Pin (1,3) |
| 6 | 1123 640 3200 | 1 | Oil pump 0.55 (1,3) |
| 7 | 1139 647 4000 | 1 | Oil hose (1,3) |
| 8 | 1123 640 3800 | 1 | Pickup body (1,3) |
| 9 | 1128 640 9100 | 1 | Valve (1,3) |
| 10 | 1139 358 7700 | 1 | Hose (1,3) |
| 11 | 1139 122 3900 | 1 | Elbow connector (1,3) |
| 12 | 1139 358 7704 | 1 | Hose (1,3) |
| 13 | 1123 664 2400 | 1 | Collar screw (1,3) |
| 14 | 1123 664 2402 | 1 | Collar screw (1,3) |
| 15 | 1139 442 1600 | 1 | Contact spring (1,3) |
| 16 | 1139 353 2700 | 1 | Connector (1,3) |
| 17 | | 1 | Hose 3.1x5.7x67 mm (D) (1,3) |
| | 0000 930 2803 | 1 | Hose 3.1x5.7 mm x 1 m (A,B) (1,3) |
| 18 | 0000 350 5802 | 1 | Tank vent (1,3) |
| 19 | 0000 350 3500 | 1 | Pickup body (1,3) |
| 20 | 0000 350 0525 | 1 | Filler cap (1,3) 21 |
| 21 | 9645 948 7734 | 1 | O-ring 25x3.5 (1,3) |
| 22 | 0000 350 0526 | 1 | Filler cap (1,3) 23 |
| 23 | 9645 948 2470 | 1 | O-ring 23x3 (1,3) |

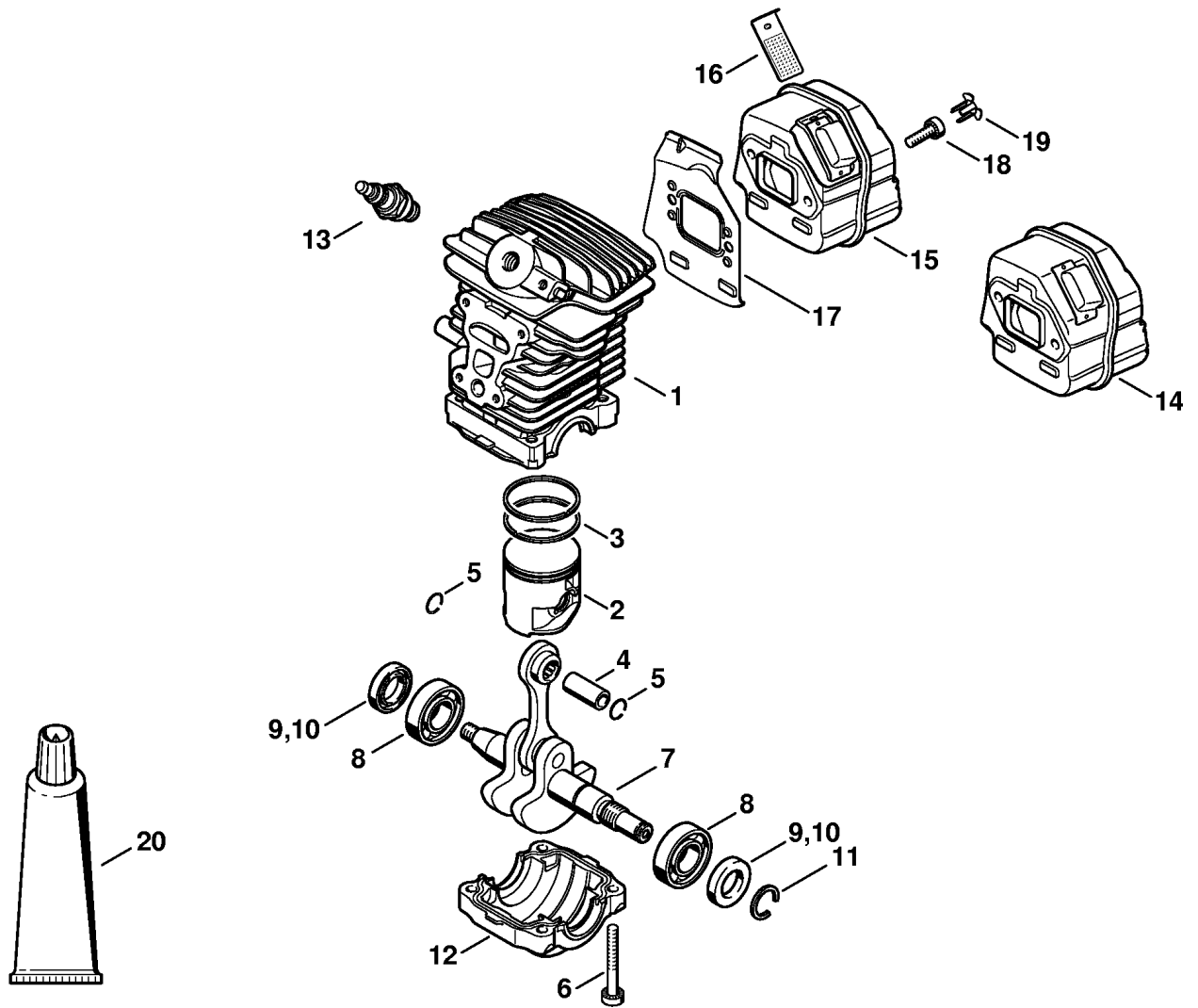
(1) MS 181, (2) MS 181 C-BE, (3) MS 181-Z, (4) MS 181 C-BE Z



534ET010 SC

| Reference | Item number | Qty | Description |
|-----------|---------------|-----|-----------------------------------|
| 1 | 1139 020 3001 | 1 | Engine housing (2,4) 2 - 21 |
| 2 | 0000 989 0608 | 1 | Grommet (2,4) |
| 3 | 1120 162 5200 | 1 | Pin (2,4) |
| 4 | 1123 162 5200 | 1 | Pin (2,4) |
| 5 | 1123 162 5205 | 1 | Pin (2,4) |
| 6 | 1123 640 3200 | 1 | Oil pump 0.55 (2,4) |
| 7 | 1139 647 4000 | 1 | Oil hose (2,4) |
| 8 | 1123 640 3800 | 1 | Pickup body (2,4) |
| 9 | 1128 640 9100 | 1 | Valve (2,4) |
| 10 | 1139 358 7700 | 1 | Hose (2,4) |
| 11 | 1139 122 3900 | 1 | Elbow connector (2,4) |
| 12 | 1139 358 7704 | 1 | Hose (2,4) |
| 13 | 1123 664 2400 | 1 | Collar screw (2,4) |
| 14 | 1123 664 2402 | 1 | Collar screw (2,4) |
| 15 | 1139 442 1600 | 1 | Contact spring (2,4) |
| 16 | 1139 353 2701 | 1 | Connector (2,4) |
| 17 | 4130 350 6200 | 1 | Fuel pump (2,4) |
| 18 | | 1 | Hose 2.2x5.4x38 mm (D) (2,4) |
| 19 | | 1 | Hose 2.2x5.4x98 mm (D) (2,4) |
| | 0000 930 2802 | 1 | Hose 2.2x5.4 mm x 1 m (A,B) (2,4) |
| 20 | | 1 | Hose 3.1x5.7x67 mm (D) (2,4) |
| | 0000 930 2803 | 1 | Hose 3.1x5.7 mm x 1 m (A,B) (2,4) |
| 21 | 0000 350 5802 | 1 | Tank vent (2,4) |
| 22 | 0000 350 3500 | 1 | Pickup body (2,4) |
| 23 | 0000 350 0525 | 1 | Filler cap (2,4) 24 |
| 24 | 9645 948 7734 | 1 | O-ring 25x3.5 (2,4) |
| 25 | 0000 350 0526 | 1 | Filler cap (2,4) 26 |
| 26 | 9645 948 2470 | 1 | O-ring 23x3 (2,4) |

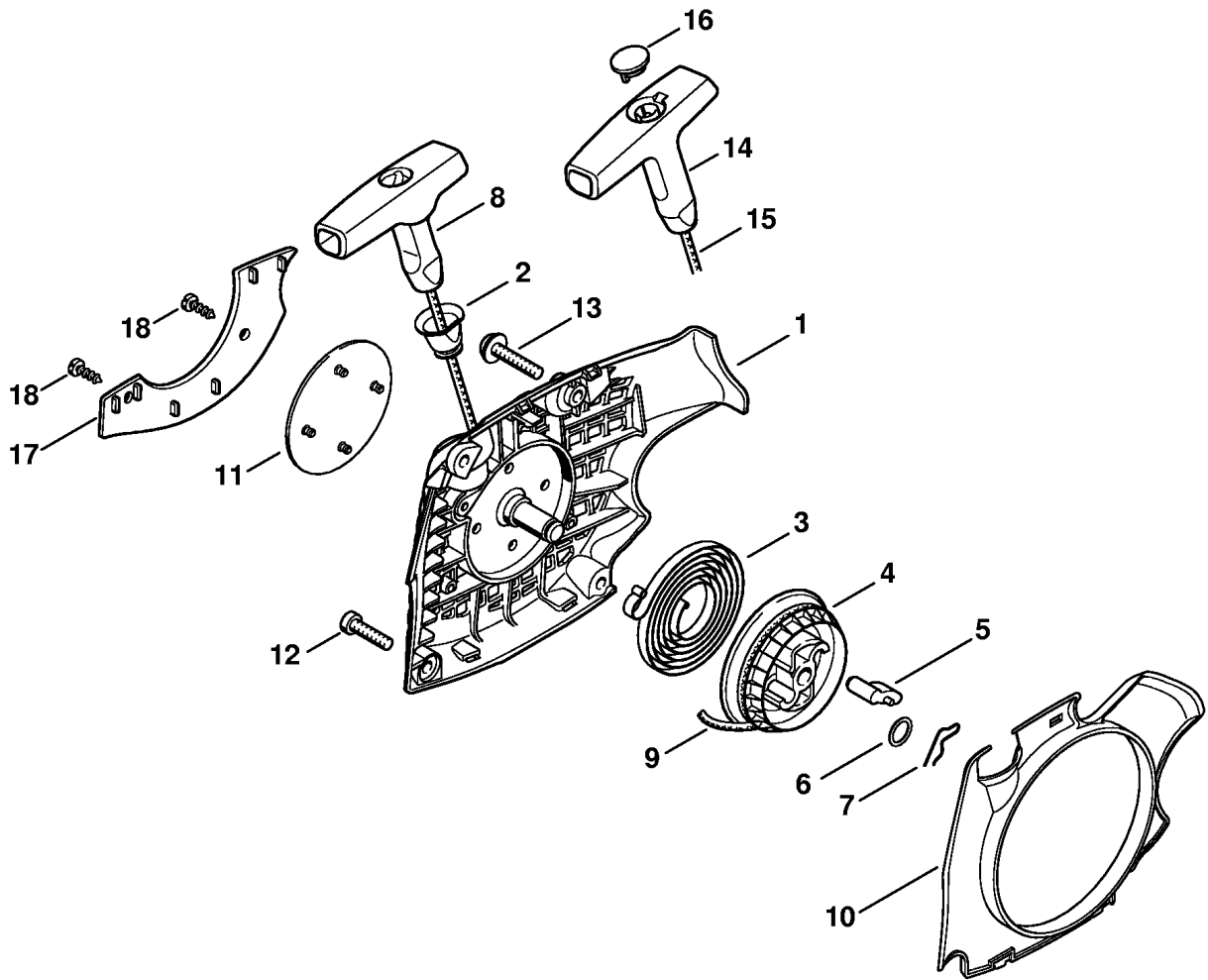
(1) MS 181, (2) MS 181 C-BE, (3) MS 181-Z, (4) MS 181 C-BE Z



534ET001 SC

| Reference | Item number | Qty | Description |
|-----------|---------------|-----|--|
| 1 | 1139 020 1201 | 1 | Cylinder with piston Ø 38 mm 2 - 6 |
| 2 | 1139 030 2002 | 1 | Piston Ø 38 mm 3 - 5 |
| 3 | 1130 034 3002 | 2 | Piston ring Ø 38x1.2 mm |
| 4 | 1139 034 1500 | 1 | Piston pin 10x6.5x23 |
| 5 | 9463 650 1000 | 2 | Snap ring 10 |
| 6 | 9075 478 4195 | 4 | Pan head self-tapping screw IS-D5.3x41 |
| 7 | 1139 030 0401 | 1 | Crankshaft (25.2005) |
| 8 | 9503 003 0312 | 2 | Grooved ball bearing 6002 |
| 9 | 9638 003 1581 | 2 | Oil seal 15x25x5 (20.2007) |
| 10 | 9639 003 1585 | 2 | Oil seal 15x25x5 (20.2007) |
| 11 | 9468 621 1520 | 1 | Circlip 15x1 |
| 12 | 1139 021 2503 | 1 | Engine pan |
| 13 | 0000 400 7011 | 1 | Spark plug NGK CMR6H |
| 14 | 1139 140 0602 | 1 | Muffler (1,2) |
| 15 | 1139 140 0601 | 1 | Muffler (3,4) USA, AUS, CDN 16 |
| 16 | 1139 141 9000 | 1 | Screen (3,4) USA, AUS, CDN |
| 17 | 1139 141 3201 | 1 | Cooling plate |
| 18 | 9075 478 4085 | 2 | Pan head self-tapping screw IS-D5x18 |
| 19 | 1135 145 9002 | 2 | Plug |
| 20 | 0783 830 2000 | 1 | Tube of sealant Dirko HT red |

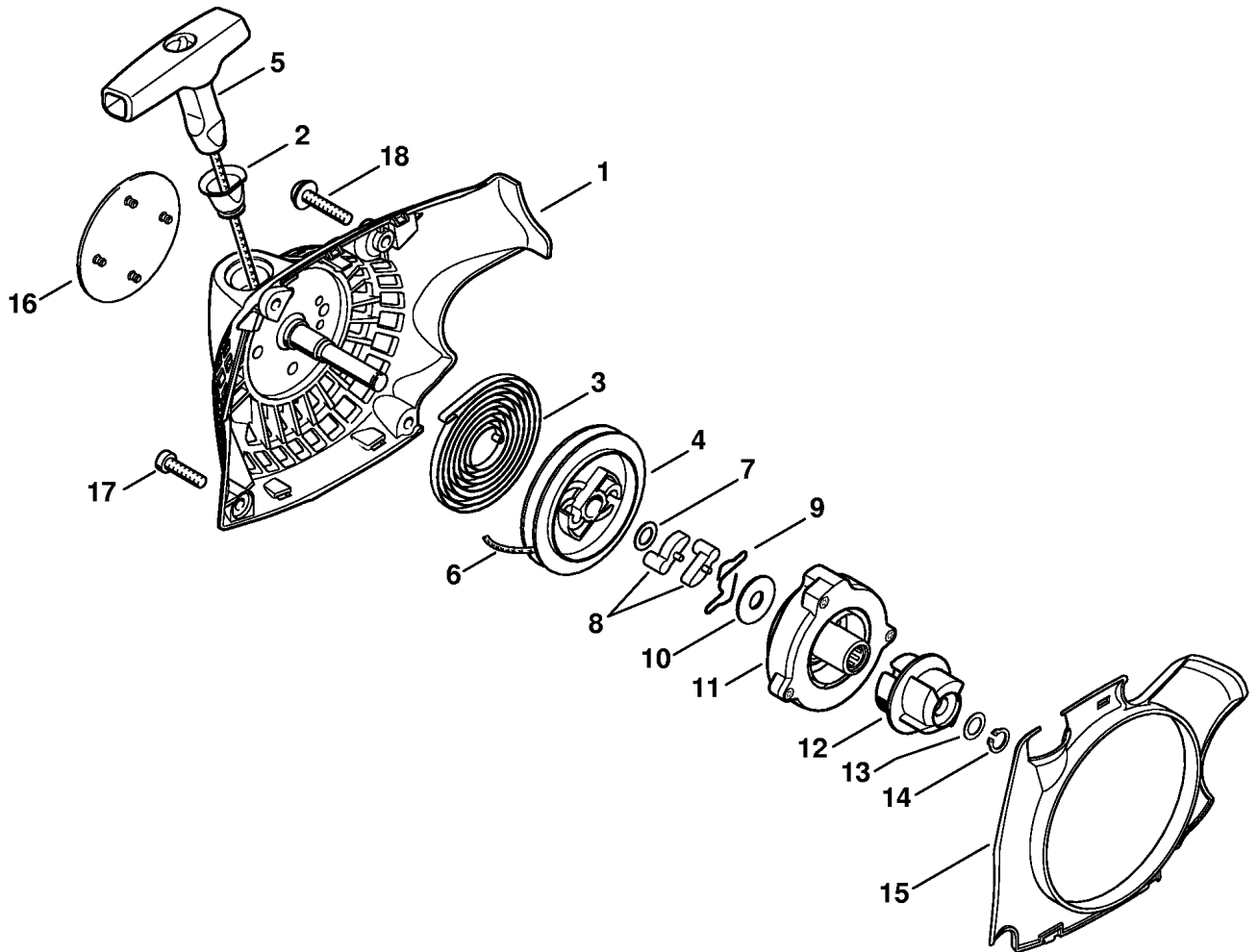
(1) MS 181, (2) MS 181 C-BE, (3) MS 181-Z, (4) MS 181 C-BE Z



533ET002 SC

| Reference | Item number | Qty | Description |
|-----------|---------------|-----|---|
| | 1139 080 2102 | 1 | Fan housing with rewind starter (1,3) 1 - 11 |
| 1 | 1139 080 1802 | 1 | Fan housing (1,3) 2 |
| 2 | 1110 084 9102 | 1 | Bushing (1,3) |
| 3 | 1129 190 0601 | 1 | Rewind spring (1,3) |
| 4 | 1123 195 0400 | 1 | Rope rotor (1,3) |
| 5 | 1125 195 7200 | 1 | Pawl (1,3) |
| 6 | 0000 958 0923 | 1 | Washer (1,3) |
| 7 | 1118 195 3500 | 1 | Spring (1,3) |
| 8 | 1121 195 3400 | 1 | Starter grip (1,3) |
| 9 | 0000 195 8203 | 1 | Starter rope Ø 3x850 mm (1,3) |
| 10 | 1139 084 7800 | 1 | Segment (1,3) |
| 11 | 1139 967 1501 | 1 | Model plate MS 181 (1,3) |
| 12 | 9074 477 4135 | 3 | Pan head self-tapping screw IS-P5x20 (1,3) |
| 13 | 9074 477 4139 | 1 | Pan head self-tapping screw IS-P5x25 (1,3) |
| 14 | 0000 190 3402 | 1 | Starter grip ElastoStart Ø 3 mm (B) (1,3) 15, 16 |
| 15 | 0000 195 8200 | 1 | Starter rope Ø 3x800 mm (B) (1,3) |
| 16 | 0000 195 7001 | 1 | Cap (B) (1,3) |
| | 1139 007 1001 | 1 | Cover plate kit (B) (1,3) 17, 18 |
| 17 | 1139 084 8200 | 1 | Cover plate (B) (1,3) |
| 18 | 9099 021 2770 | 2 | Self-tapping screw 3.9x13 (B) (1,3) |

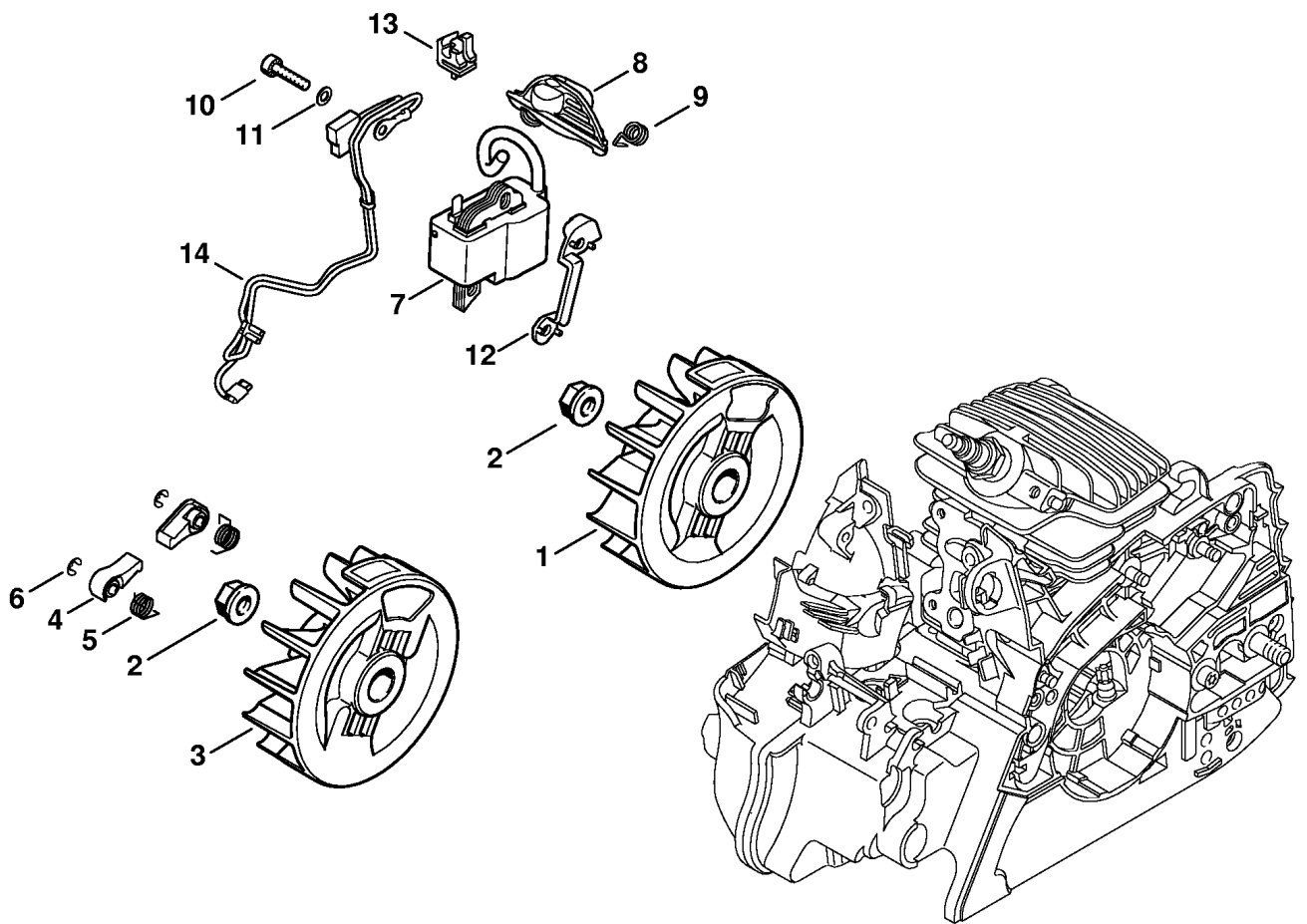
(1) MS 181, (2) MS 181 C-BE, (3) MS 181-Z, (4) MS 181 C-BE Z



534ET002 SC

| Reference | Item number | Qty | Description |
|-----------|---------------|-----|--|
| | 1139 080 2103 | 1 | Fan housing with rewind starter (2,4) 1 - 16 |
| 1 | 1139 080 1803 | 1 | Fan housing (2,4) 2 |
| 2 | 1110 084 9102 | 1 | Bushing (2,4) |
| 3 | 1123 190 0600 | 1 | Rewind spring (2,4) |
| 4 | 1123 195 0401 | 1 | Rope rotor (2,4) |
| 5 | 1121 195 3400 | 1 | Starter grip (2,4) |
| 6 | 4137 195 8200 | 1 | Starter rope \varnothing 2.7x910 mm (2,4) |
| | 0000 930 2281 | 1 | Starter rope \varnothing 2.7 mm x 30.8 m (A,B) (2,4) |
| 7 | 0000 958 0923 | 1 | Washer (2,4) |
| 8 | 1123 195 7200 | 2 | Pawl (2,4) |
| 9 | 1128 195 3500 | 1 | Spring (2,4) |
| 10 | 1123 195 9001 | 1 | Washer (2,4) |
| 11 | 1139 190 0700 | 1 | Spring housing (2,4) |
| 12 | 1139 195 2000 | 1 | Carrier (2,4) |
| 13 | 0000 958 0806 | 1 | Washer (2,4) |
| 14 | 9455 621 0570 | 1 | Circlip 8x0.8 (2,4) |
| 15 | 1139 084 7800 | 1 | Segment (2,4) |
| 16 | 1139 967 1502 | 1 | Model plate MS 181 C (2,4) |
| 17 | 9074 477 4135 | 3 | Pan head self-tapping screw IS-P5x20 (2,4) |
| 18 | 9074 477 4139 | 1 | Pan head self-tapping screw IS-P5x25 (2,4) |

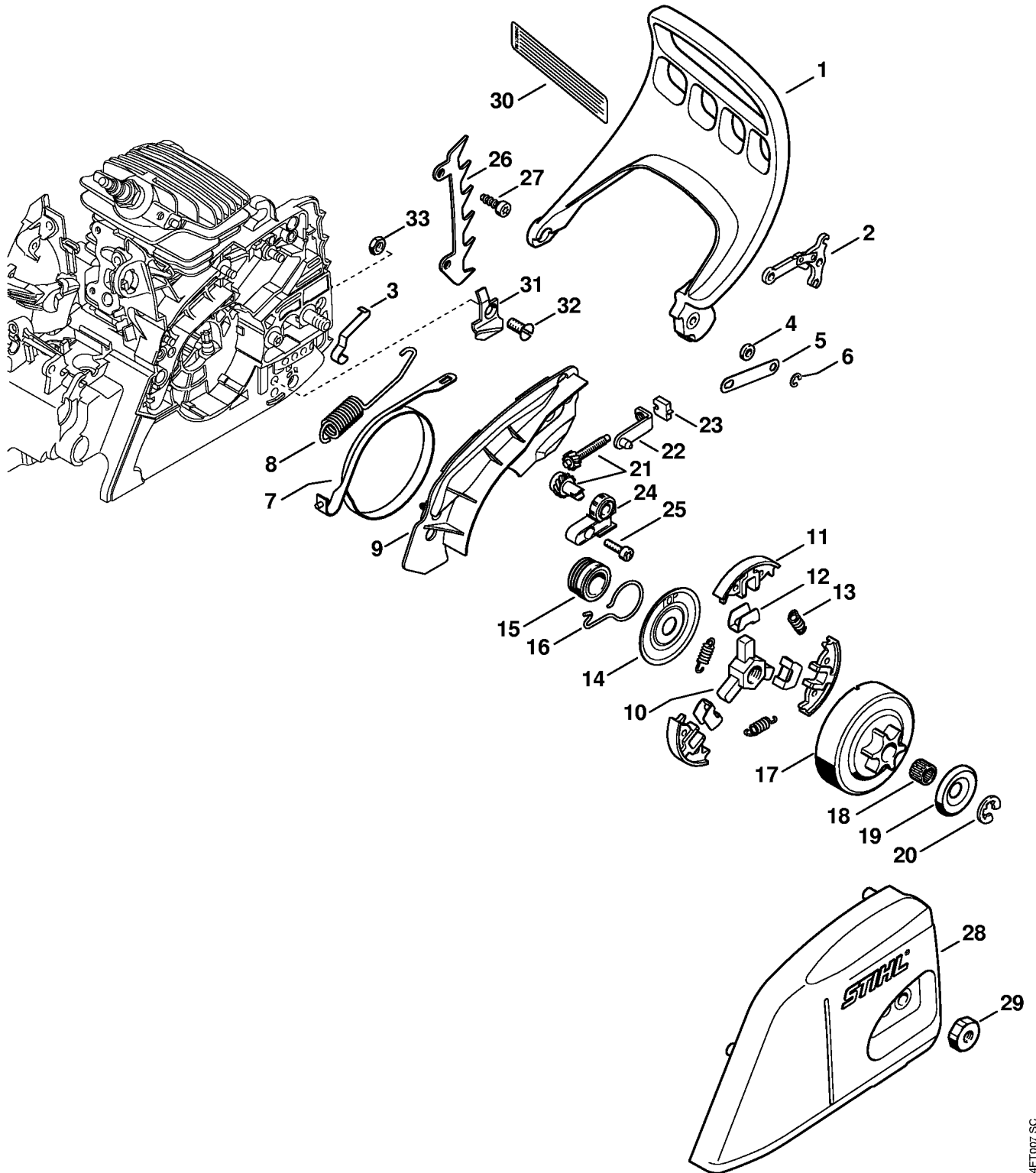
(1) MS 181, (2) MS 181 C-BE, (3) MS 181-Z, (4) MS 181 C-BE Z



534ET003 SC

| Reference | Item number | Qty | Description |
|-----------|---------------|-----|--------------------------------------|
| 1 | 1139 400 1201 | 1 | Flywheel (1,3) (25.2005) |
| 2 | 0000 955 0802 | 1 | Collar nut M8x1 |
| 3 | 1139 400 1203 | 1 | Flywheel (2,4) (25.2005) 4 - 6 |
| 4 | 1139 195 7200 | 2 | Pawl (2,4) |
| 5 | 0000 998 1100 | 2 | Torsion spring (2,4) |
| 6 | 9460 624 0320 | 2 | E-clip 3.2 (2,4) |
| 7 | 1139 400 1307 | 1 | Ignition module 8, 9 |
| 8 | 0000 405 1003 | 1 | Spark plug boot |
| 9 | 0000 998 0618 | 1 | Torsion spring |
| 10 | 9075 478 3018 | 2 | Pan head self-tapping screw IS-D4x18 |
| 11 | 9291 021 0100 | 1 | Washer 4.3 |
| 12 | 1139 405 8000 | 1 | Insulator |
| 13 | 1139 448 1200 | 1 | Lead retainer |
| 14 | 1139 440 3000 | 1 | Wiring harness |

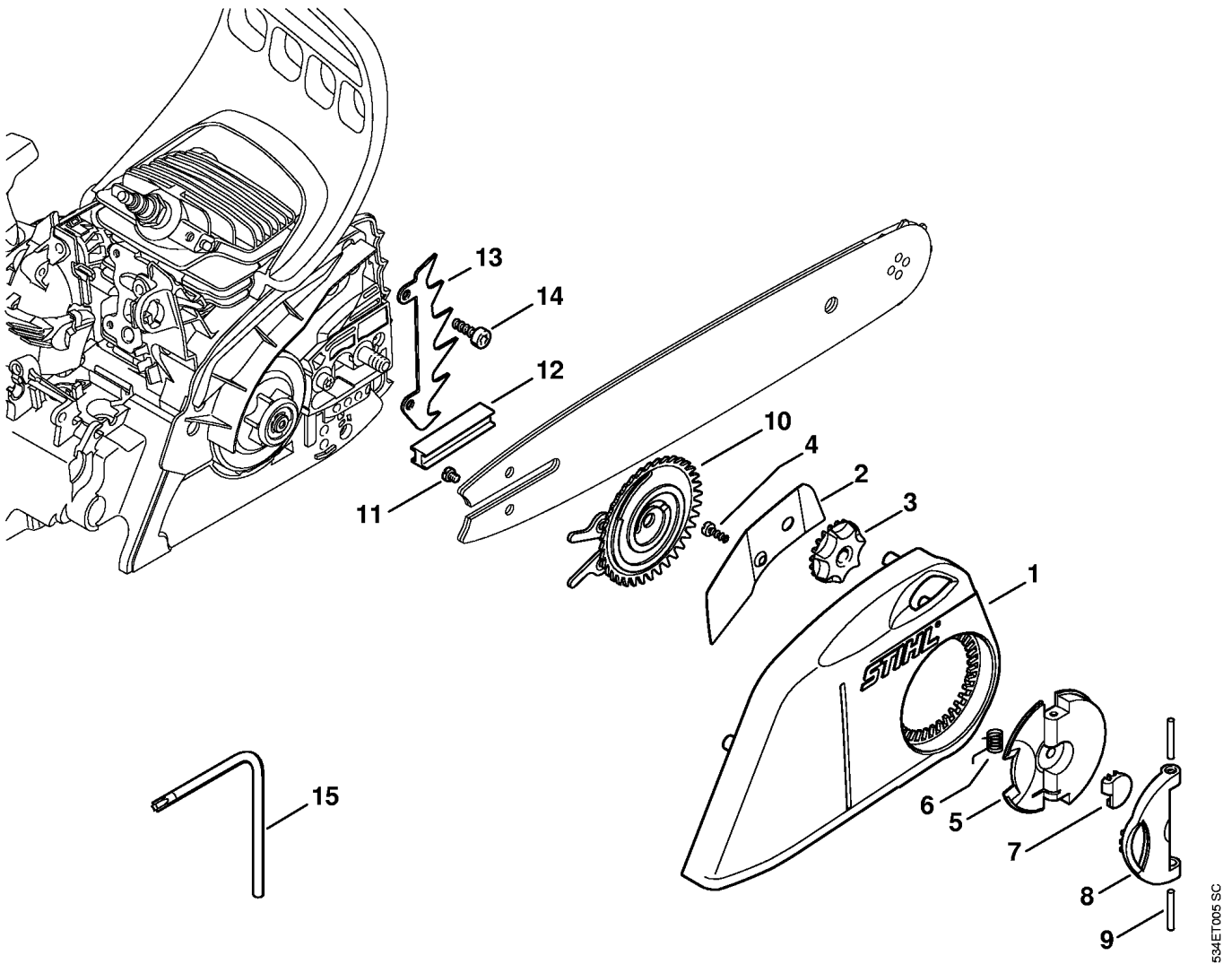
(1) MS 181, (2) MS 181 C-BE, (3) MS 181-Z, (4) MS 181 C-BE Z



534ET007 SC

| Reference | Item number | Qty | Description |
|-----------|---------------|-----|---|
| 1 | 1139 792 9100 | 1 | Hand guard |
| 2 | 1121 160 5000 | 1 | Lever |
| 3 | 1123 162 7800 | 1 | Flat spring |
| 4 | 0000 958 0521 | 1 | Washer |
| 5 | 1123 162 5800 | 1 | Strap |
| 6 | 9460 624 0400 | 1 | E-clip 4 |
| 7 | 1139 160 5400 | 1 | Brake band |
| 8 | 1139 162 7900 | 1 | Tension spring |
| 9 | 1139 021 1100 | 1 | Cover |
| | 1139 160 2000 | 1 | Clutch 10 - 13 |
| 10 | 1121 162 3201 | 1 | Carrier |
| 11 | 1139 162 0800 | 3 | Clutch shoe |
| 12 | 1127 162 3000 | 3 | Retainer |
| 13 | 0000 997 5600 | 3 | Tension spring |
| 14 | 1121 162 1001 | 1 | Cover washer |
| 15 | 1123 640 7102 | 1 | Worm 16 |
| 16 | 1123 647 2400 | 1 | Spring |
| 17 | 1123 640 2073 | 1 | Chain sprocket 3/8" Picco 6T |
| 18 | 9512 933 2260 | 1 | Needle cage 10x13x10 |
| 19 | 0000 958 1022 | 1 | Washer Ø 27 mm |
| 20 | 9460 624 0801 | 1 | E-clip 8x1.3 |
| | 1123 007 1000 | 1 | Chain tensioner kit (B) (1,3) 21 - 25 |
| 21 | 1123 007 1004 | 1 | Spur gear / chain adjusting screw kit (1,3) |
| 22 | 1123 640 1900 | 1 | Tensioner slide (1,3) |
| 23 | 1123 664 1400 | 1 | Thrust pad (1,3) |
| 24 | 1123 664 2200 | 1 | Cover (1,3) |
| 25 | 9075 478 3015 | 1 | Pan head self-tapping screw IS-D4x15 (1,3) |
| 26 | 1123 664 0500 | 1 | Bumper spike (1,3) |
| 27 | 9075 478 4115 | 2 | Pan head self-tapping screw IS-D5x16 (1,3) |
| 28 | 1139 640 1700 | 1 | Chain sprocket cover (1,3) |
| 29 | 0000 955 0801 | 1 | Hexagon nut M8 (1,3) |
| 30 | 0000 967 3630 | 1 | Instruction label (3,4) USA |
| 31 | 1139 650 7700 | 1 | Chain catcher (20.2007) 32, 33 |
| 32 | 9062 319 1270 | 1 | Countersunk screw M6x14 (20.2007) |
| 33 | 9214 320 0900 | 1 | Lock nut M6 (20.2007) |

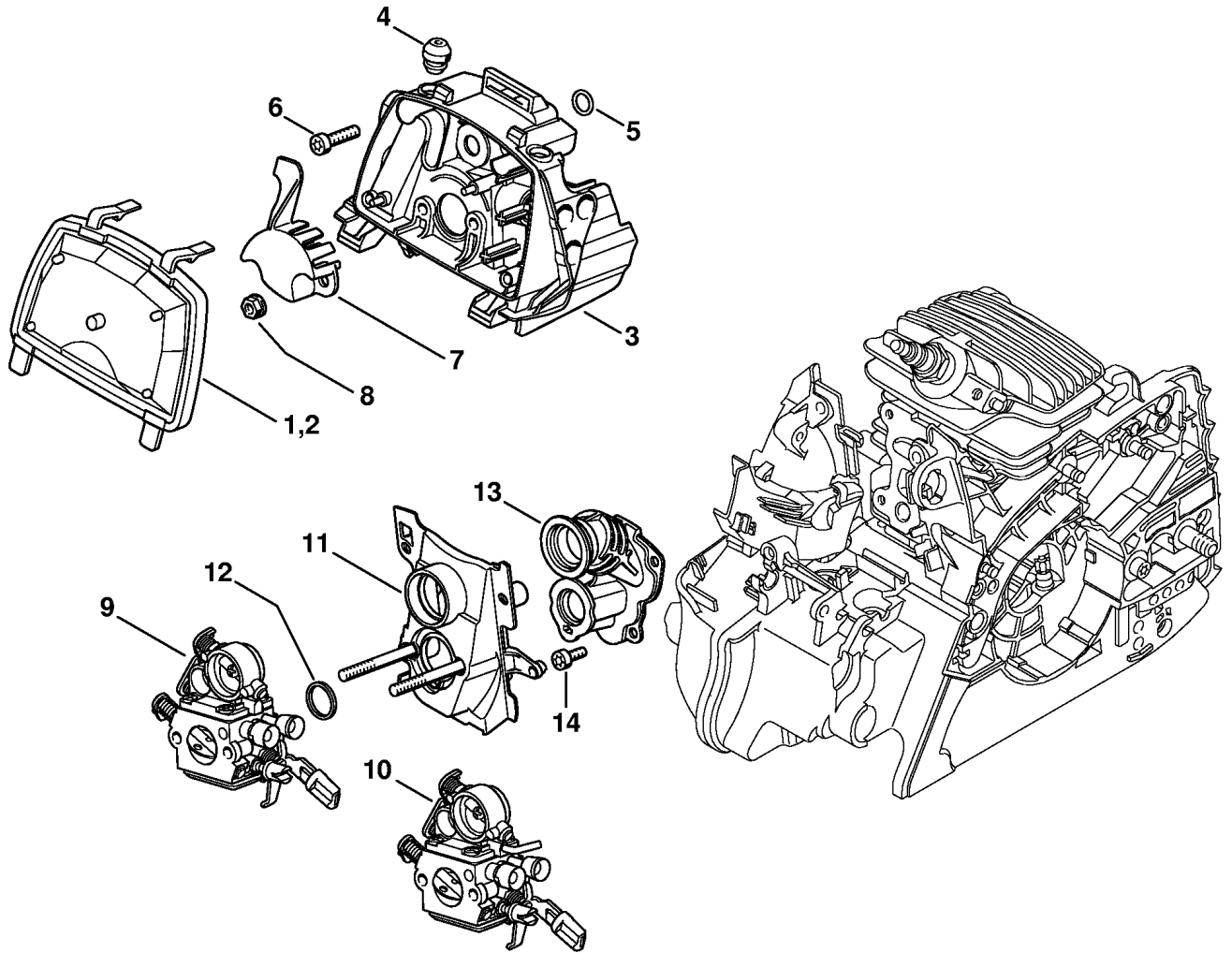
(1) MS 181, (2) MS 181 C-BE, (3) MS 181-Z, (4) MS 181 C-BE Z



534ET005 SC

| Reference | Item number | Qty | Description |
|-----------|---------------|-----|--|
| | 1139 007 1000 | 1 | Quick tensioner parts (B) 1 - 15 |
| 1 | 1139 640 1701 | 1 | Chain sprocket cover (2,4) 2 - 4 |
| 2 | 1139 648 3800 | 1 | Cover plate (2,4) |
| 3 | 1123 648 2202 | 1 | Adjusting wheel (2,4) |
| 4 | 9076 478 2996 | 1 | Pan head self-tapping screw P4x12 (2,4) |
| 5 | 1121 660 1000 | 1 | Wing nut (2,4) 6 - 9 |
| 6 | | 1 | Torsion spring (D) (2,4) |
| 7 | | 1 | Cap (D) (2,4) |
| 8 | | 1 | Handle (D) (2,4) |
| 9 | | 2 | Cylindrical pin 3m6x26 (D) (2,4) |
| 10 | 1123 660 3001 | 1 | Tensioning gear (2,4) 11 |
| 11 | 9041 319 0600 | 1 | Pan head screw M4x5 (2,4) |
| 12 | 1123 021 2800 | 1 | Insert (2,4) |
| 13 | 1123 664 0501 | 1 | Bumper spike (2,4) |
| 14 | 9075 478 4115 | 2 | Pan head self-tapping screw IS-D5x16 (2,4) |
| 15 | 0812 370 1000 | 1 | Screwdriver T27x120x70 (B) |

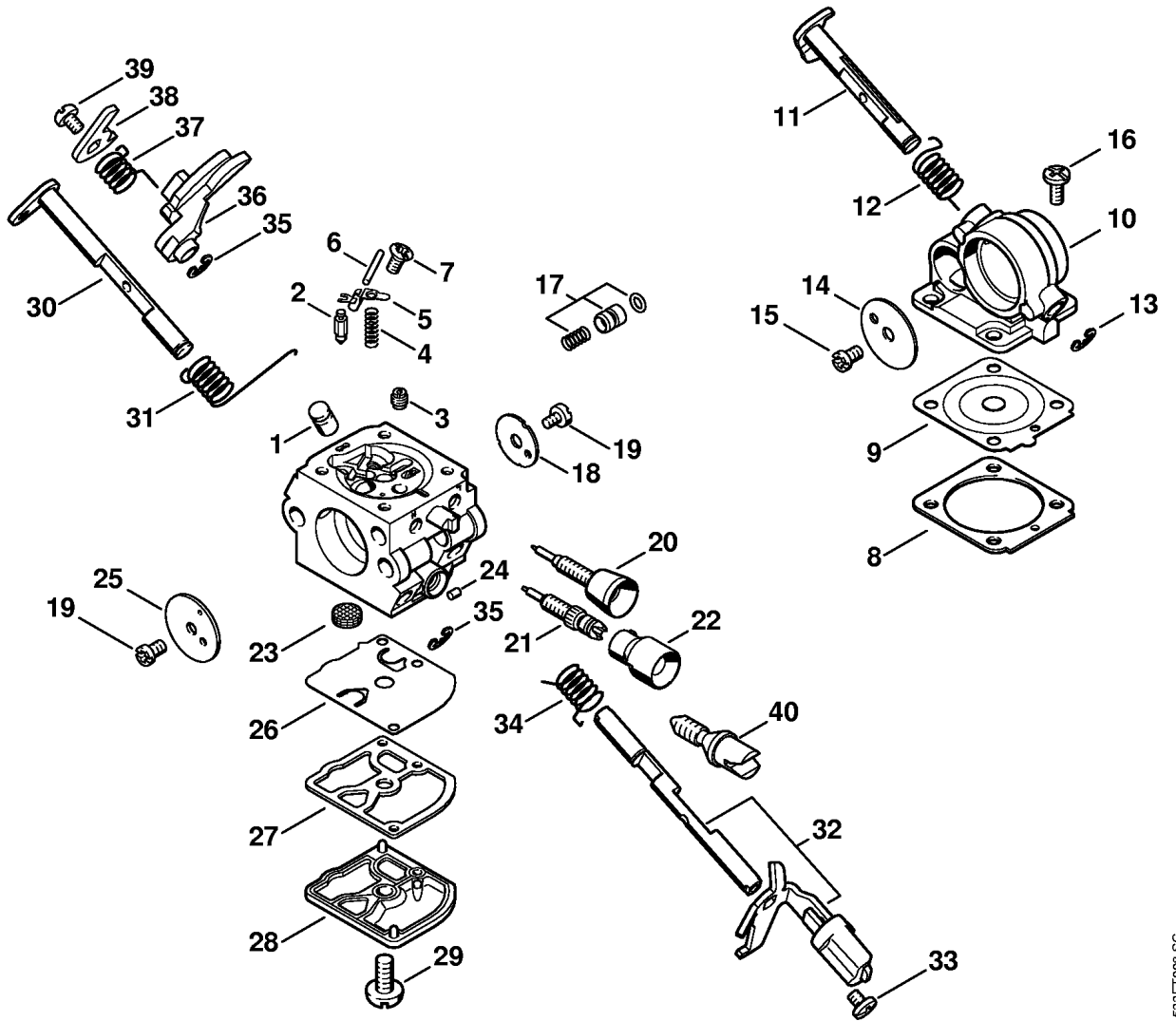
(1) MS 181, (2) MS 181 C-BE, (3) MS 181-Z, (4) MS 181 C-BE Z



534ET005 SC

| Reference | Item number | Qty | Description |
|-----------|---------------|-----|--------------------------------------|
| 1 | 1139 120 1602 | 1 | Air filter, fleece |
| 2 | 1139 120 1601 | 1 | Air filter (B) |
| 3 | 1139 120 3401 | 1 | Filter base 4, 5 |
| 4 | 1139 791 5900 | 2 | Stop buffer |
| 5 | 9646 945 0610 | 1 | O-ring 8x1.6 |
| 6 | 9074 477 4135 | 3 | Pan head self-tapping screw IS-P5x20 |
| 7 | 1139 121 6900 | 1 | Baffle |
| 8 | 9216 261 0700 | 2 | Hexagon nut M5 |
| 9 | 1139 120 0605 | 1 | Carburetor C1Q-S121B (1,3) |
| 10 | 1139 120 0606 | 1 | Carburetor C1Q-S122B (2,4) |
| 11 | 1139 120 0900 | 1 | Carburetor bracket |
| 12 | 1139 141 1801 | 1 | Sleeve |
| 13 | 1139 140 2500 | 1 | Manifold |
| 14 | 9075 478 3012 | 4 | Pan head self-tapping screw IS-D4x12 |

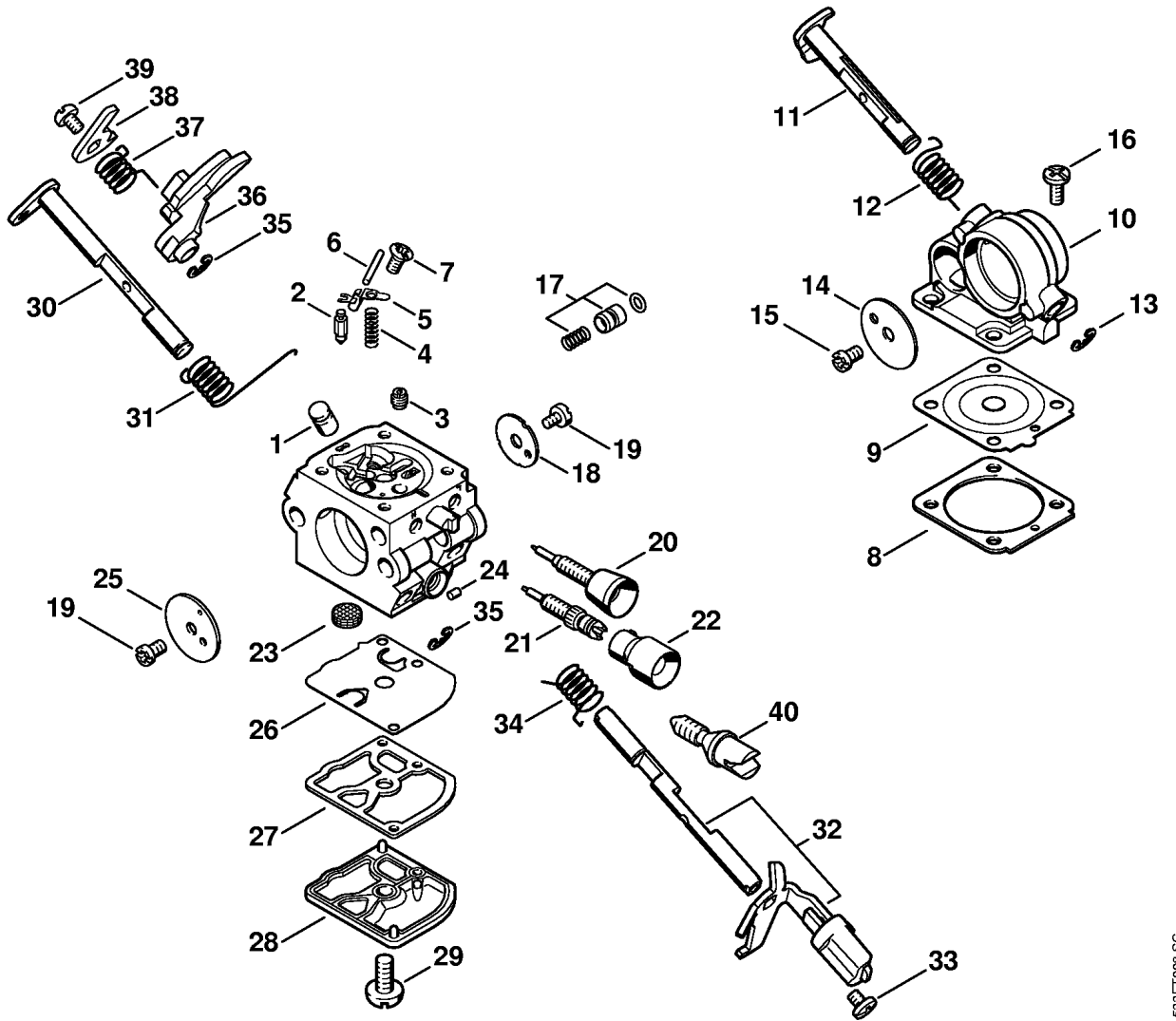
(1) MS 181, (2) MS 181 C-BE, (3) MS 181-Z, (4) MS 181 C-BE Z



533ET008 SC

| Reference | Item number | Qty | Description |
|-----------|---------------|-----|--------------------------------------|
| | 1139 120 0605 | 1 | Carburetor C1Q-S121B (1,3) 1 - 40 |
| 1 | 1139 121 5400 | 1 | Valve jet (1,3) |
| 2 | 4116 121 5100 | 1 | Inlet needle (1,3) |
| 3 | 1132 121 5603 | 1 | Fixed jet 0.50 (1,3) |
| 4 | 4128 122 3000 | 1 | Spring (1,3) |
| 5 | 1125 121 5000 | 1 | Inlet control lever (1,3) |
| 6 | 1120 121 9200 | 1 | Spindle (1,3) |
| 7 | 1120 122 6600 | 1 | Collar screw (1,3) |
| 8 | 4229 129 0901 | 1 | Gasket (1,3) |
| 9 | 4229 121 4700 | 1 | Metering diaphragm (1,3) |
| 10 | 1139 120 0800 | 1 | End cover (1,3) 11 - 15 |
| 11 | 1139 120 7300 | 1 | Air valve shaft with lever (1,3) |
| 12 | 1139 122 3200 | 1 | Torsion spring (1,3) |
| 13 | 4282 122 9000 | 1 | E-clip (1,3) |
| 14 | 1139 126 0300 | 1 | Air valve (1,3) |
| 15 | 1125 122 7402 | 1 | Round head screw (1,3) |
| 16 | 1120 122 6601 | 4 | Collar screw (1,3) |
| 17 | 1139 120 9700 | 1 | Pump piston kit (1,3) |
| 18 | 1139 121 3300 | 1 | Throttle shutter (1,3) |
| 19 | 1125 122 7403 | 1 | Round head screw (1,3) |
| 20 | 1139 122 6800 | 1 | Low speed adjustment screw (1,3) |
| 21 | 1139 122 6700 | 1 | High speed adjustment screw (1,3) |
| 22 | 4229 121 2701 | 1 | Cap (1,3) |
| 23 | 1123 121 7800 | 1 | Strainer (1,3) |
| 24 | 1125 122 4200 | 1 | Ball (1,3) |
| 25 | 1123 121 2904 | 1 | Choke shutter (1,3) |
| 26 | 1129 121 4800 | 1 | Pump diaphragm (1,3) |
| 27 | 1123 129 0905 | 1 | Gasket (1,3) |
| 28 | 1139 121 0800 | 1 | End cover (1,3) |
| 29 | 1120 122 7800 | 1 | Oval head screw (1,3) |
| 30 | 1139 120 7200 | 1 | Choke shaft with lever (1,3) |
| 31 | 1139 122 3202 | 1 | Torsion spring (1,3) |

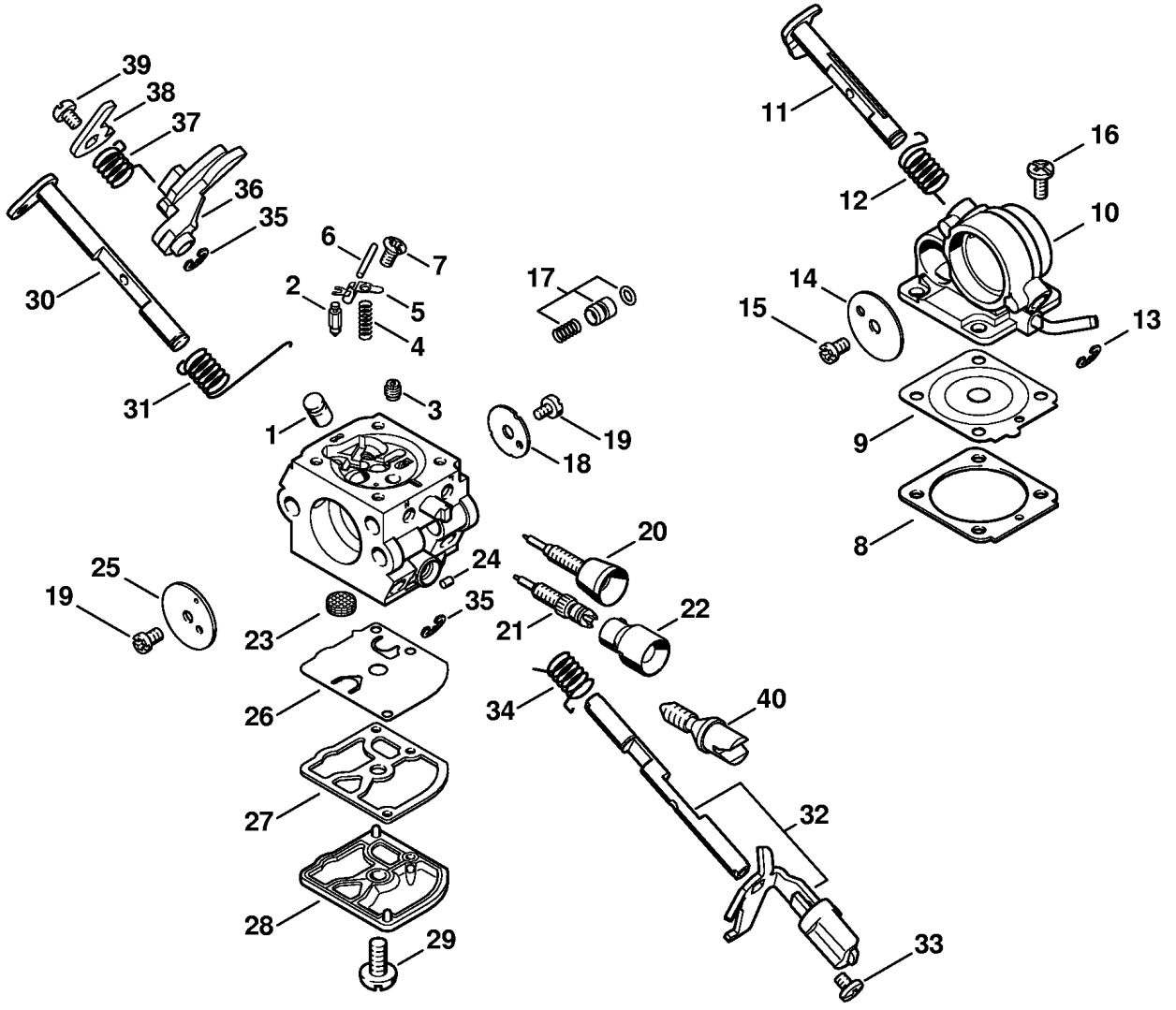
(1) MS 181, (2) MS 181 C-BE, (3) MS 181-Z, (4) MS 181 C-BE Z



533ET008 SC

| Reference | Item number | Qty | Description |
|-----------|---------------|-----|---|
| 32 | 1139 120 7100 | 1 | Throttle shaft with lever (1,3) 33 |
| 33 | 1139 122 7101 | 1 | Screw (1,3) |
| 34 | 1139 122 3201 | 1 | Torsion spring (1,3) |
| 35 | 4282 122 9000 | 2 | E-clip (1,3) |
| 36 | 1139 121 3501 | 1 | Throttle lever (1,3) |
| 37 | 1139 122 3203 | 1 | Torsion spring (1,3) |
| 38 | 1139 121 3502 | 1 | Throttle lever (1,3) |
| 39 | 9079 319 0280 | 1 | Flat head screw M3x3.5 (1,3) |
| 40 | 1139 122 6200 | 1 | Idle speed adjustment screw (1,3) |
| | 4229 007 1060 | 1 | Set of carburetor parts (1,3) 8, 9, 26, 27 |

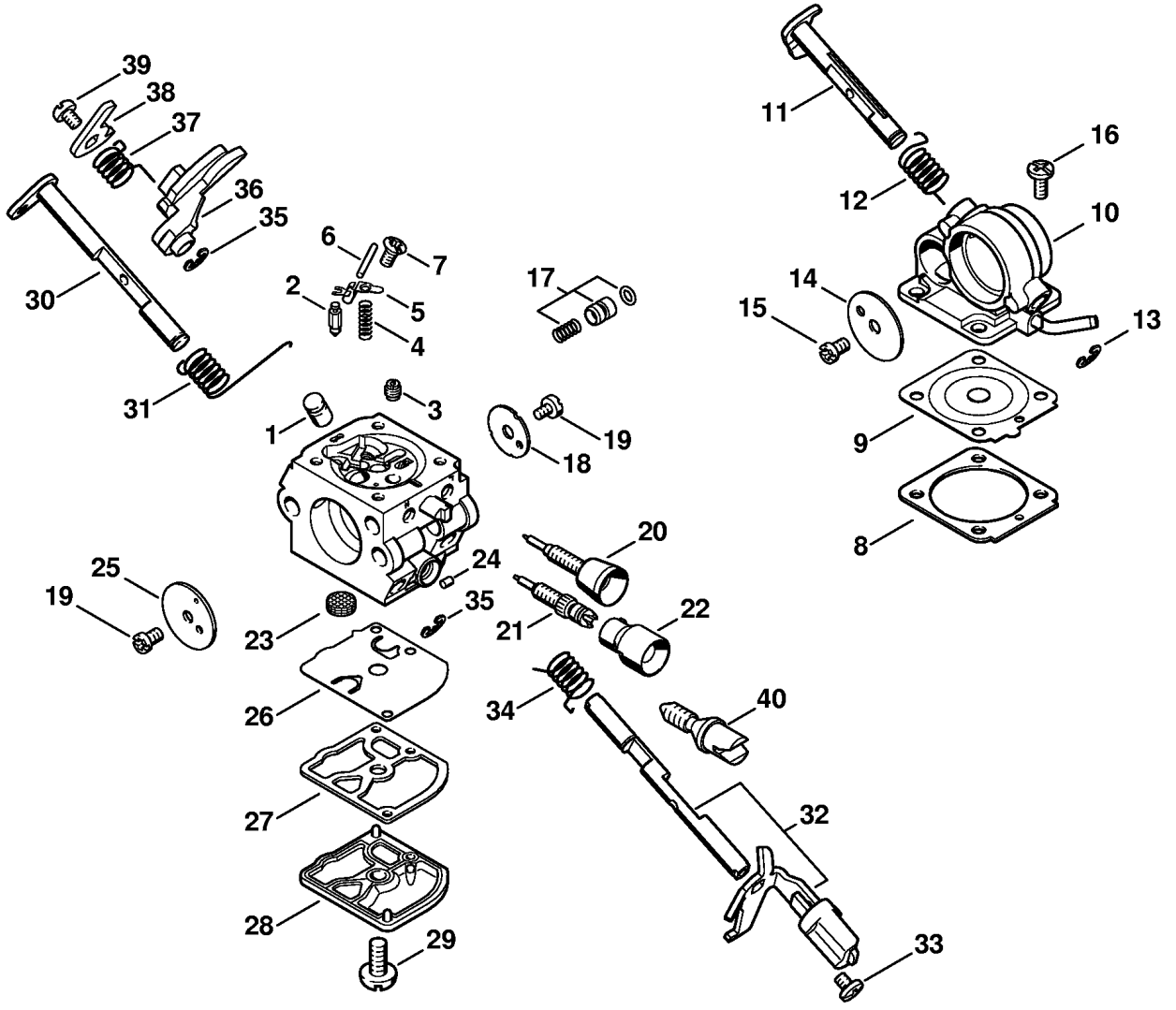
(1) MS 181, (2) MS 181 C-BE, (3) MS 181-Z, (4) MS 181 C-BE Z



535FT02P.SC

| Reference | Item number | Qty | Description |
|-----------|---------------|-----|--------------------------------------|
| | 1139 120 0606 | 1 | Carburetor C1Q-S122B (2,4) 1 - 40 |
| 1 | 1139 121 5400 | 1 | Valve jet (2,4) |
| 2 | 4116 121 5100 | 1 | Inlet needle (2,4) |
| 3 | 1132 121 5603 | 1 | Fixed jet 0.50 (2,4) |
| 4 | 4128 122 3000 | 1 | Spring (2,4) |
| 5 | 1125 121 5000 | 1 | Inlet control lever (2,4) |
| 6 | 1120 121 9200 | 1 | Spindle (2,4) |
| 7 | 1120 122 6600 | 1 | Collar screw (2,4) |
| 8 | 4229 129 0901 | 1 | Gasket (2,4) |
| 9 | 4229 121 4700 | 1 | Metering diaphragm (2,4) |
| 10 | 1139 120 0801 | 1 | End cover (2,4) 11 - 15 |
| 11 | 1139 120 7300 | 1 | Air valve shaft with lever (2,4) |
| 12 | 1139 122 3200 | 1 | Torsion spring (2,4) |
| 13 | 4282 122 9000 | 1 | E-clip (2,4) |
| 14 | 1139 126 0300 | 1 | Air valve (2,4) |
| 15 | 1125 122 7402 | 1 | Round head screw (2,4) |
| 16 | 1120 122 6601 | 4 | Collar screw (2,4) |
| 17 | 1139 120 9700 | 1 | Pump piston kit (2,4) |
| 18 | 1139 121 3300 | 1 | Throttle shutter (2,4) |
| 19 | 1125 122 7403 | 1 | Round head screw (2,4) |
| 20 | 1139 122 6800 | 1 | Low speed adjustment screw (2,4) |
| 21 | 1139 122 6700 | 1 | High speed adjustment screw (2,4) |
| 22 | 4229 121 2701 | 1 | Cap (2,4) |
| 23 | 1123 121 7800 | 1 | Strainer (2,4) |
| 24 | 1125 122 4200 | 1 | Ball (2,4) |
| 25 | 1123 121 2904 | 1 | Choke shutter (2,4) |
| 26 | 1129 121 4800 | 1 | Pump diaphragm (2,4) |
| 27 | 1123 129 0905 | 1 | Gasket (2,4) |
| 28 | 1139 121 0800 | 1 | End cover (2,4) |
| 29 | 1120 122 7800 | 1 | Oval head screw (2,4) |
| 30 | 1139 120 7200 | 1 | Choke shaft with lever (2,4) |
| 31 | 1139 122 3202 | 1 | Torsion spring (2,4) |

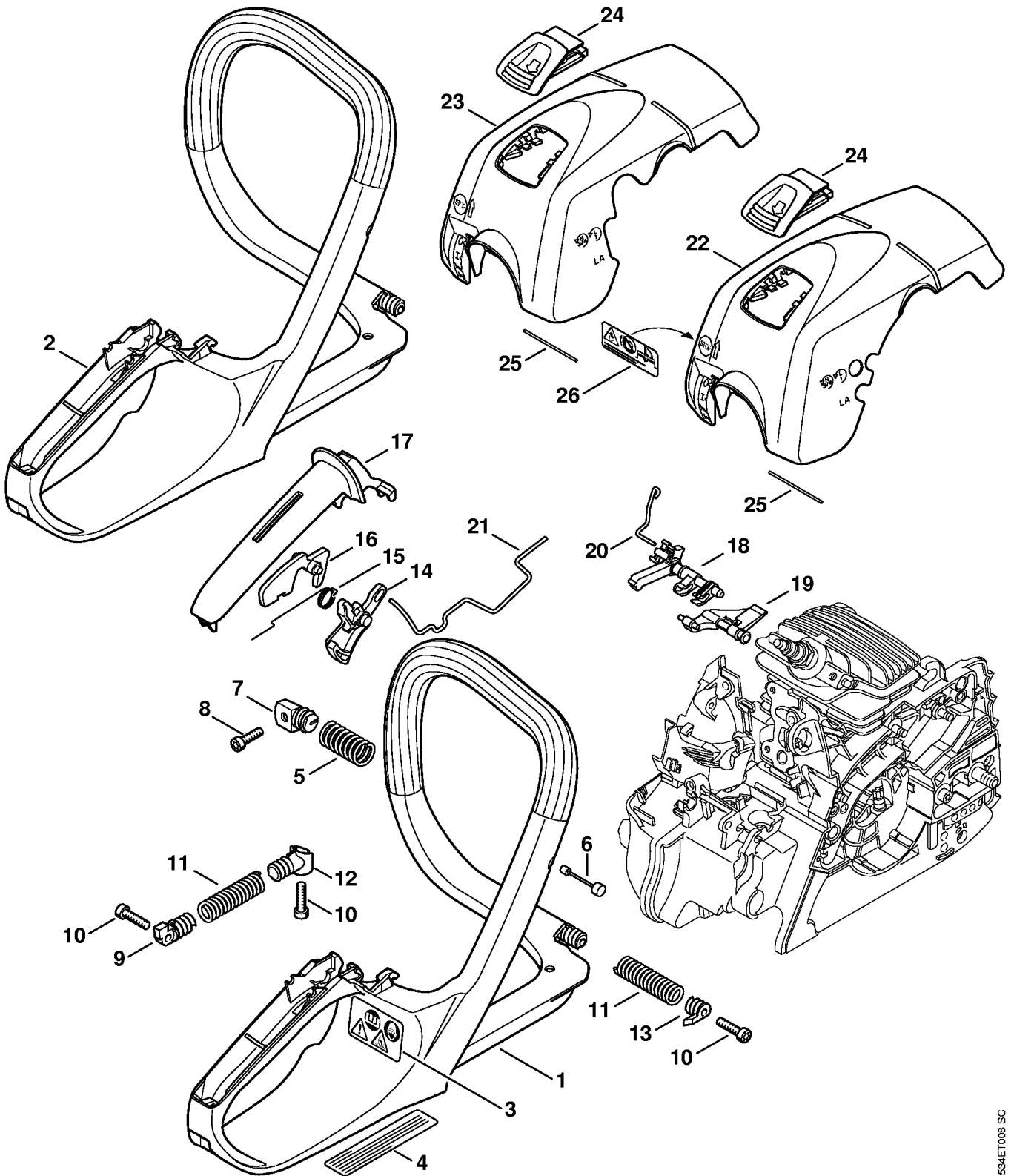
(1) MS 181, (2) MS 181 C-BE, (3) MS 181-Z, (4) MS 181 C-BE Z



536FT02P.SC

| Reference | Item number | Qty | Description |
|-----------|---------------|-----|---|
| 32 | 1139 120 7100 | 1 | Throttle shaft with lever (2,4) 33 |
| 33 | 1139 122 7101 | 1 | Screw (2,4) |
| 34 | 1139 122 3201 | 1 | Torsion spring (2,4) |
| 35 | 4282 122 9000 | 2 | E-clip (2,4) |
| 36 | 1139 121 3501 | 1 | Throttle lever (2,4) |
| 37 | 1139 122 3203 | 1 | Torsion spring (2,4) |
| 38 | 1139 121 3502 | 1 | Throttle lever (2,4) |
| 39 | 9079 319 0280 | 1 | Flat head screw M3x3.5 (2,4) |
| 40 | 1139 122 6200 | 1 | Idle speed adjustment screw (2,4) |
| | 4229 007 1060 | 1 | Set of carburetor parts (2,4) 8, 9, 26, 27 |

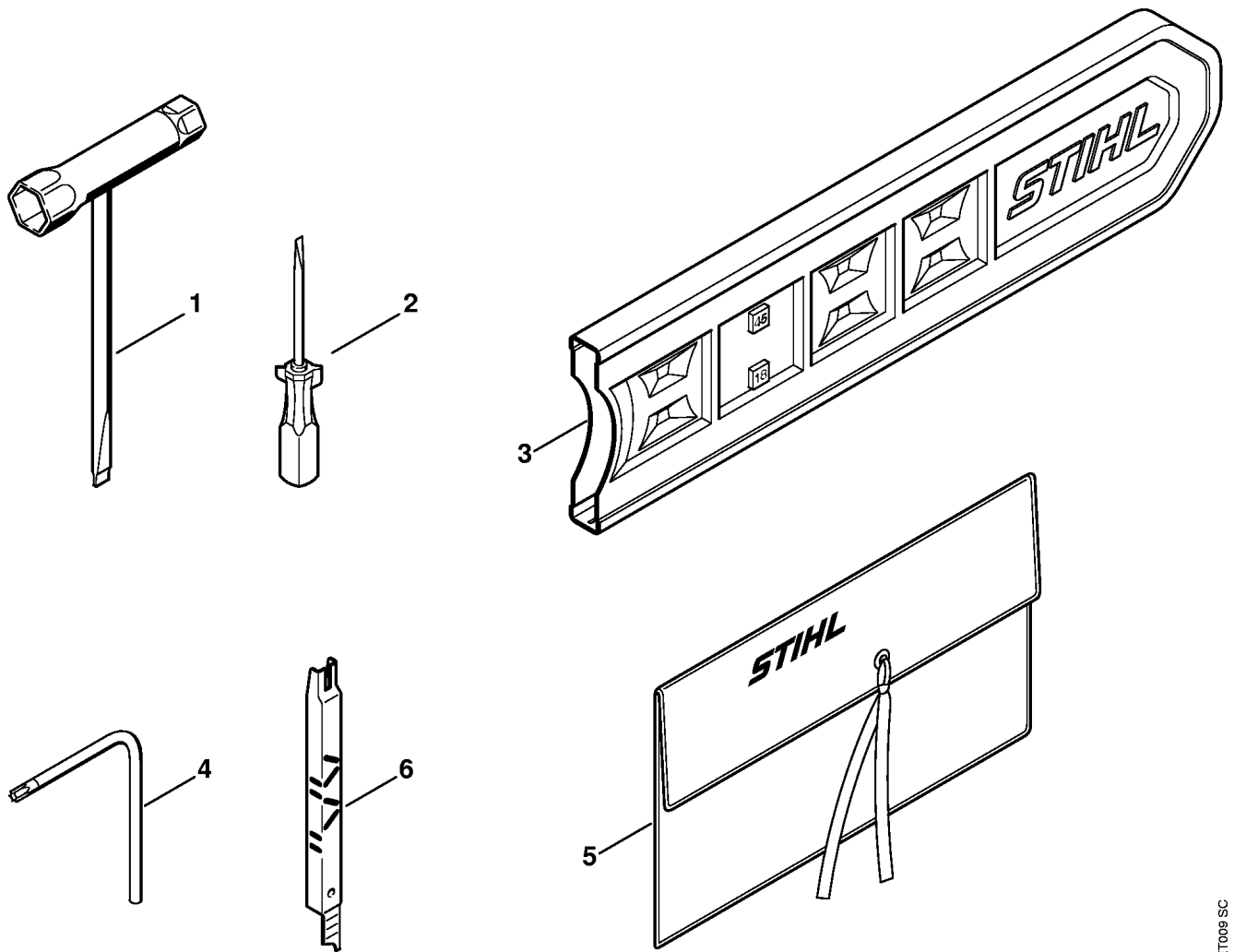
(1) MS 181, (2) MS 181 C-BE, (3) MS 181-Z, (4) MS 181 C-BE Z



534ET008 SC

| Reference | Item number | Qty | Description |
|-----------|---------------|-----|---|
| 1 | 1139 791 4900 | 1 | Handle frame (1,3) |
| 2 | 1139 791 4901 | 1 | Handle frame (2,4) |
| 3 | 0000 967 3662 | 1 | Warning pictogram MS |
| 4 | 0000 967 3500 | 1 | Instruction label (3,4) USA |
| 5 | 0000 791 3104 | 1 | Spring |
| 6 | 1139 790 8100 | 1 | Retainer |
| 7 | 1139 792 2901 | 1 | Bearing plug |
| 8 | 9075 478 4085 | 1 | Pan head self-tapping screw IS-D5x18 |
| 9 | 1139 792 2902 | 1 | Bearing plug |
| 10 | 9074 477 4135 | 3 | Pan head self-tapping screw IS-P5x20 |
| 11 | 0000 791 3103 | 2 | Spring |
| 12 | 1139 792 2903 | 1 | Bearing plug |
| 13 | 1139 792 2900 | 1 | Bearing plug |
| 14 | 1139 182 1000 | 1 | Throttle trigger |
| 15 | 1117 182 4500 | 1 | Torsion spring |
| 16 | 1139 182 0800 | 1 | Trigger interlock |
| 17 | 1139 791 0600 | 1 | Handle molding |
| 18 | 1139 182 0900 | 1 | Switch shaft |
| 19 | 1139 182 2800 | 1 | Lever |
| 20 | 1139 185 1900 | 1 | Choke rod |
| 21 | 1139 182 1500 | 1 | Throttle rod |
| 22 | 1139 140 4702 | 1 | Shroud (1,3) 24, 25 |
| 23 | 1139 140 4703 | 1 | Shroud (2,4) 24, 25 |
| 24 | 1139 140 3100 | 1 | Slide 25 |
| 25 | 0000 141 4900 | 1 | Spring |
| 26 | 0000 967 3749 | 1 | Warning pictogram Filler cap (3,4) USA, CDN |

(1) MS 181, (2) MS 181 C-BE, (3) MS 181-Z, (4) MS 181 C-BE Z



534ET009 SC

| Reference | Item number | Qty | Description |
|-----------|---------------|-----|----------------------------|
| 1 | 0000 890 3400 | 1 | Combination wrench |
| 2 | 0000 890 2300 | 1 | Screwdriver |
| 3 | 0000 792 9152 | 1 | Chain scabbard |
| 4 | 0812 370 1000 | 1 | Screwdriver T27x120x70 (B) |
| 5 | 0000 891 0801 | 1 | Tool roll (B) |
| 6 | 1110 893 4000 | 1 | Filing gauge (B) |

(1) MS 181, (2) MS 181 C-BE, (3) MS 181-Z, (4) MS 181 C-BE Z