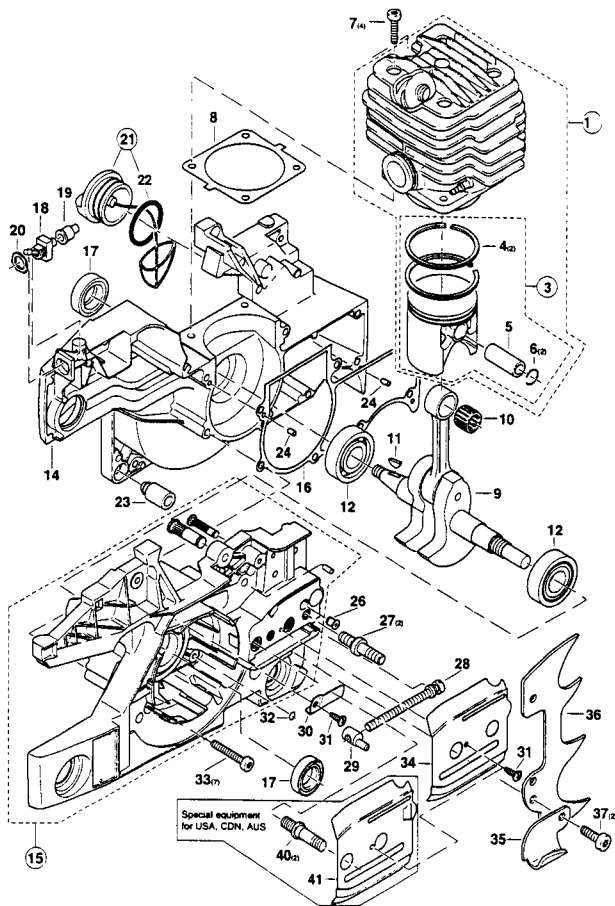


CONTENTS

- 1) **Cylinder, Piston, Crankshaft, Crankcase**
- 2) **Fuel Tank, Tubular Grip, Rubber Buffer**
- 3) **Ignition Electronics, Flywheel, Starter**
- 4) **Oil Pump, Clutch, Chain Brake**
- 5) **Hood, Air Filter**
- 6) **Muffler**
- 7) **Carburetor**
- 8) **Accessories**

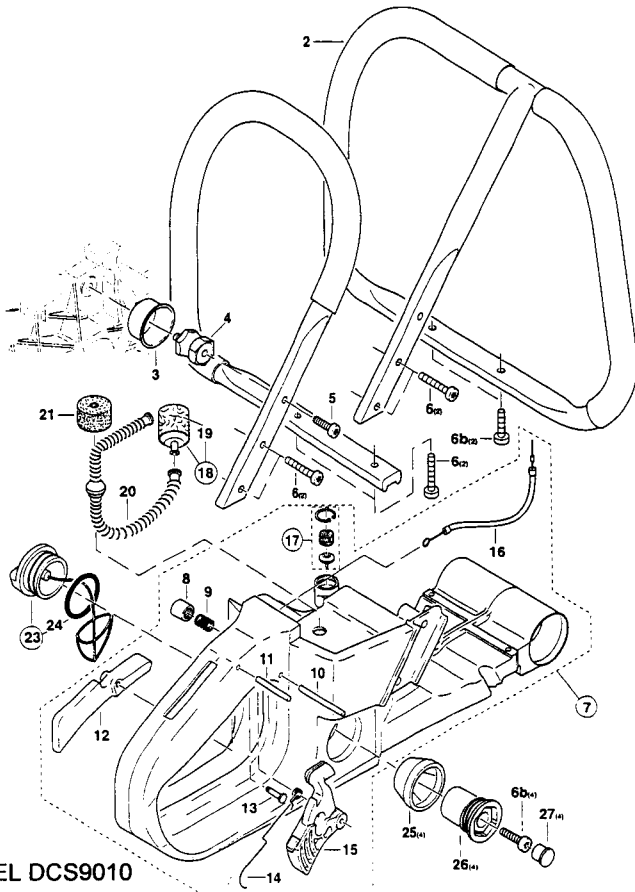
IMPORTANT! – To assure product **SAFETY** and **RELIABILITY**, repairs, maintenance or adjustments should be performed by **MAKITA** Service Centers, or other qualified service organizations. Always use **MAKITA** replacement parts.

1) Cylinder, Piston, Crankshaft, Crankcase



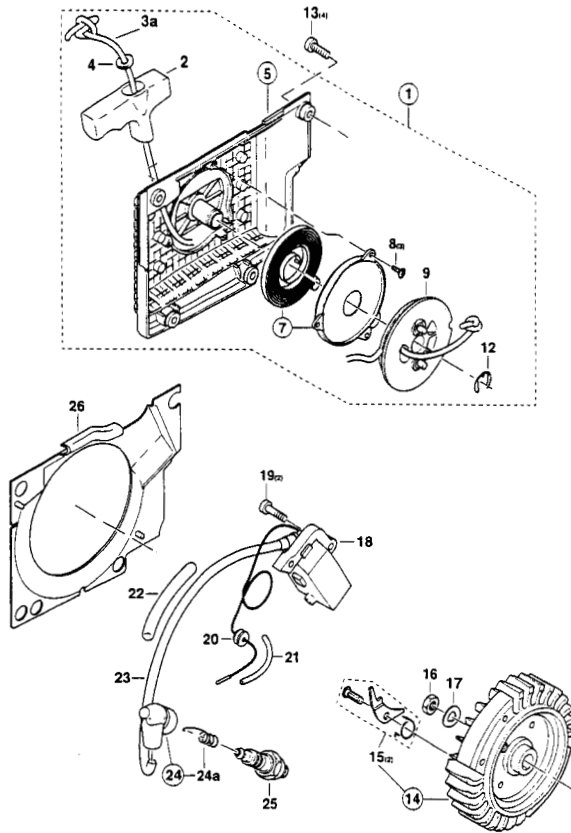
| Fig. | Part No. | Qty. Used | Description |
|------|-------------|-----------|-------------------------|
| 1 | 024-130-300 | 1 | CYLINDER & PISTON ASSY. |
| 3 | 024-132-020 | 1 | PISTON CPL. |
| 4 | 133-132-050 | 2 | PISTON RING |
| 5 | 031-132-020 | 1 | SPRING PIN |
| 6 | 119-132-060 | 2 | SPRING RING |
| 7 | 908-005-205 | 4 | SCREW M5X20 |
| 8 | 965-525-060 | 1 | GASKET |
| 9 | 024-120-022 | 1 | CRANKSHAFT |
| 10 | 962-210-028 | 1 | NEEDLE CAGE |
| 11 | 939-630-370 | 1 | KEY |
| 12 | 960-102-179 | 2 | BALL BEARING |
| 14 | 024-111-621 | 1 | CRANKCASE, MAG. SIDE |
| 15 | 024-111-640 | 1 | CRANKCASE, CLUTCH SIDE |
| 16 | 965-525-070 | 1 | GASKET |
| 17 | 962-900-054 | 2 | RADIAL RING |
| 18 | 965-605-400 | 1 | STOP SWITCH |
| 19 | 965-605-131 | 1 | RUBBER BUSH |
| 20 | 965-605-120 | 1 | NUT |
| 21 | 010-114-050 | 1 | OIL TANK PLUG CPL. |
| 22 | 963-228-030 | 1 | GASKET |
| 23 | 965-403-370 | 1 | SHOCK ABSORBER |
| 24 | 936-430-160 | 2 | SPIRAL CLAMPING PIN |
| 26 | 010-245-010 | 1 | VENT VALVE |
| 27 | 024-232-030 | 2 | BOLT |
| 28 | 001-213-160 | 1 | TENSIONING SCREW |
| 29 | 001-213-170 | 1 | NUT WITH PIVOT |
| 30 | 024-111-100 | 1 | SAFETY PLATE |
| 31 | 915-735-100 | 2 | SCREW |
| 32 | 963-204-015 | 1 | PACKING RING |
| 33 | 908-005-305 | 7 | SCREW M5X30 |
| 34 | 024-111-071 | 1 | GUIDE PLATE |
| 35 | 024-111-050 | 1 | CHAIN CATCH |
| 36 | 024-250-030 | 1 | SPIKE BAR |
| 37 | 908-006-145 | 2 | SCREW M6X14 |
| 40 | 024-232-040 | 2 | BOLT |
| 41 | 024-111-031 | 1 | GUIDE PLATE |

2) Fuel Tank, Tubular Grip, Rubber Buffer



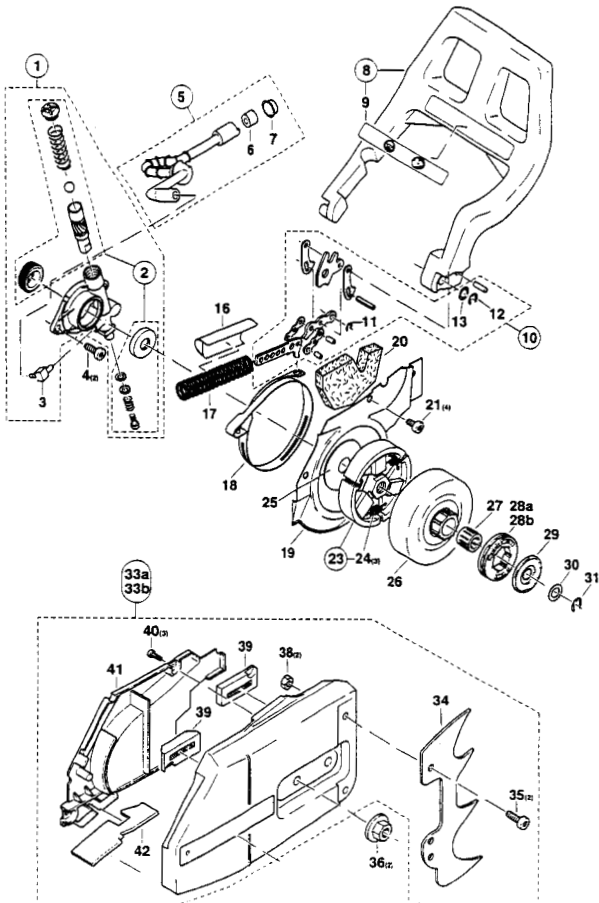
| Fig. | Part No. | Qty. Used | Description |
|------|-------------|-----------|--------------------------|
| 2 | 024-310-100 | 1 | WRAP AROUND HANDLE ASSY. |
| 3 | 965-551-250 | 1 | POT |
| 4 | 965-403-430 | 1 | RUBBER BUFFER |
| 5 | 908-005-165 | 1 | SCREW M5X16 |
| 6 | 913-455-304 | 4 | SCREW 5X30 |
| 6b | 913-455-204 | 4 | SCREW 5X20 |
| 7 | 024-114-630 | 1 | TANK ASSY. (FUEL) |
| 8 | 965-451-750 | 1 | BUTTON |
| 9 | 965-551-160 | 1 | PRESSURE SPRING |
| 10 | 935-930-450 | 1 | CYLINDRICAL PIN 3X45 |
| 11 | 935-930-280 | 1 | CYLINDRICAL PIN 3X28 |
| 12 | 024-117-020 | 1 | CATCH LEVER |
| 13 | 965-551-150 | 1 | STOPPIN |
| 14 | 024-117-031 | 1 | SPRING |
| 15 | 024-117-010 | 1 | THROTTLE LEVER |
| 16 | 965-725-041 | 1 | BOWDEN CABLE |
| 17 | 957-114-010 | 1 | AIR VALVE CPL. |
| 18 | 963-601-120 | 1 | SUCTION HEAD (FUEL) |
| 19 | 963-601-240 | 1 | FELT FILTER |
| 20 | 965-404-700 | 1 | FUEL LINE |
| 21 | 965-404-520 | 1 | GASKET |
| 23 | 965-451-901 | 1 | TANK PLUG CPL. (FUEL) |
| 24 | 963-232-045 | 1 | PACKING RING |
| 25 | 965-404-720 | 4 | BUSH |
| 26 | 965-403-461 | 4 | RUBBER BUFFER |
| 27 | 965-404-740 | 4 | PLUG |

3) Ignition Electronics. Flywheel, Starter



| Fig. | Part No. | Qty. Used | Description |
|------|-------------|-----------|-----------------------|
| 1 | 024-112-630 | 1 | STARTER ASSY. |
| 2 | 965-402-262 | 1 | STARTER GRIP |
| 3a | 122-164-010 | 1 | STARTER ROPE |
| 4 | 928-405-000 | 1 | DISC |
| 5 | 024-112-680 | 1 | FAN HOUSING |
| 7 | 020-163-031 | 1 | REWIND SPRING CPL. |
| 8 | 915-135-100 | 3 | SCREW |
| 9 | 024-162-081 | 1 | CABLE DRUM |
| 12 | 929-314-100 | 1 | SNAPRING |
| 13 | 908-005-165 | 4 | SCREW M5X16 |
| 14 | 024-141-210 | 1 | FLYWHEEL ASSY. |
| 15 | 031-166-010 | 2 | STARTER RATCHET CPL. |
| 16 | 920-308-024 | 1 | HEXAGONAL NUT M8X1 |
| 17 | 926-208-001 | 1 | SPRING WASHER |
| 18 | 024-143-050 | 1 | IGNITION COIL |
| 19 | 908-605-205 | 2 | SCREW M5X20 |
| 20 | 965-401-011 | 1 | RUBBER BUSH |
| 21 | 970-502-050 | 1 | INSULATING HOSE 100MM |
| 22 | 970-502-110 | 1 | INSULATING HOSE 100MM |
| 23 | 970-310-200 | 1 | IGNITION CABLE 200MM |
| 24 | 957-604-260 | 1 | PLUG CAP CPL. |
| 24a | 965-604-180 | 1 | SPRING |
| 25 | 965-603-021 | 1 | SPARK PLUG |
| 26 | 024-112-021 | 1 | AIR DUCT |

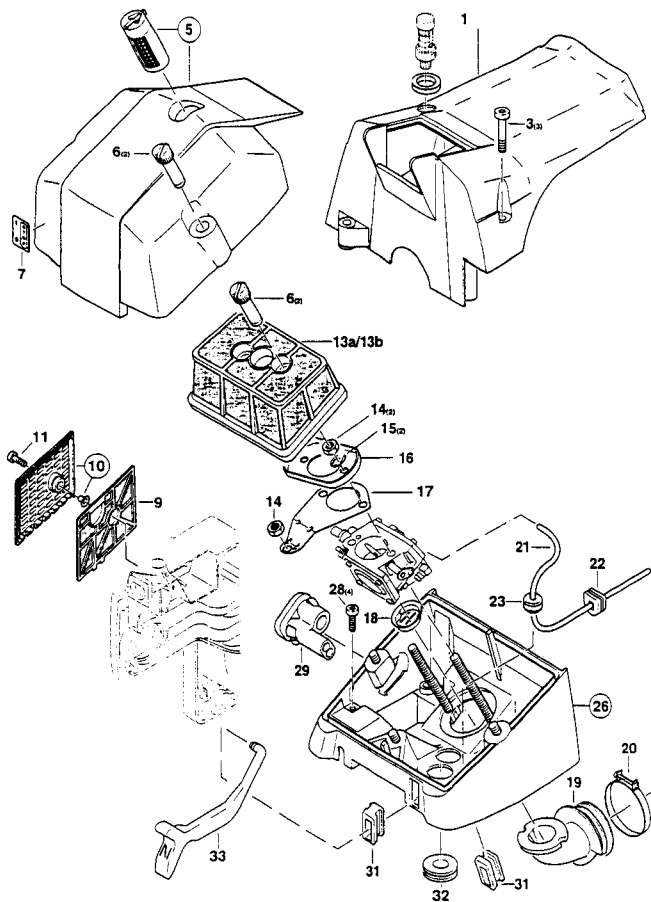
4) Oil Pump, Clutch, Chain Brake



| Fig. | Part No. | Qty. Used | Description |
|------|-------------|-----------|------------------------|
| 1 | 024-245-100 | 1 | OIL PUMP ASSY. |
| 2 | 957-245-360 | 1 | REPAIR KIT |
| 3 | 963-608-100 | 1 | ANGULAR NIPPLE |
| 4 | 908-005-125 | 2 | SCREW M5X12 |
| 5 | 024-245-200 | 1 | OIL SUCTION LINE ASSY. |
| 6 | 900-005-066 | 1 | DISTANCING |
| 7 | 963-601-100 | 1 | SCREEN |
| 8 | 024-213-180 | 1 | HAND PROTECTION CPL. |
| 9 | 980-114-237 | 1 | LABEL (SAFETY) |
| 10 | 010-213-021 | 1 | BRAKING MECHANISM |
| 11 | 927-304-000 | 1 | SAFETY WASHER |
| 12 | 927-306-000 | 1 | SAFETY WASHER |
| 13 | 900-004-364 | 1 | SPACER |
| 16 | 024-111-061 | 1 | SPRING GUIDING HEAD |
| 17 | 024-213-321 | 1 | PRESSURE SPRING |
| 18 | 024-213-351 | 1 | BRAKE SPRING |
| 19 | 024-213-101 | 1 | PLATE |
| 20 | 965-404-800 | 1 | COVER FOAM PLATE |
| 21 | 908-005-125 | 4 | SCREW M5X12 |
| 23 | 010-180-110 | 1 | CLUTCH ASSY. |
| 24 | 024-184-021 | 3 | TENSION SPRING |
| 25 | 024-182-060 | 1 | GUIDE DISC |
| 26 | 024-223-041 | 1 | CLUTCH DRUM |
| 27 | 962-210-024 | 1 | NEEDLE CAGE |
| 28a | 119-224-070 | 1 | RIMS PROCKET |
| 28b | 133-224-010 | 1 | RIMS PROCKET |
| 29 | 001-224-011 | 1 | DISC |
| 30 | 021-224-010 | 1 | DISC |
| 31 | 927-308-000 | 1 | SAFETY WASHER |
| 33a | 024-213-680 | 1 | SPROCKET GUARD CPL. |
| 33b | 024-213-690 | 1 | SPROCKET GUARD CPL. |
| 34 | 024-250-030 | 1 | SPIKE BAR |
| 35 | 908-006-145 | 2 | SCREW M6X14 |
| 36 | 923-208-004 | 2 | HEXAGONAL NUT M8 |
| 38 | 922-606-000 | 2 | HEXAGONAL NUT |
| 39 | 024-213-240 | 2 | CHAIN GUIDE |
| 40 | 915-735-100 | 3 | SCREW |
| 41 | 024-213-221 | 1 | CHIP GUIDE |
| 42 | 965-404-761 | 1 | RUBBER PLATE |

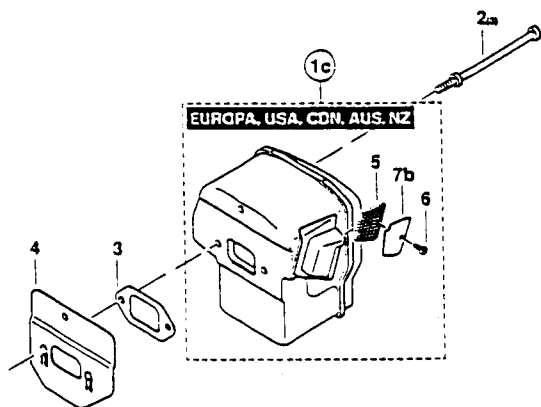


5) Hood, Air Filter



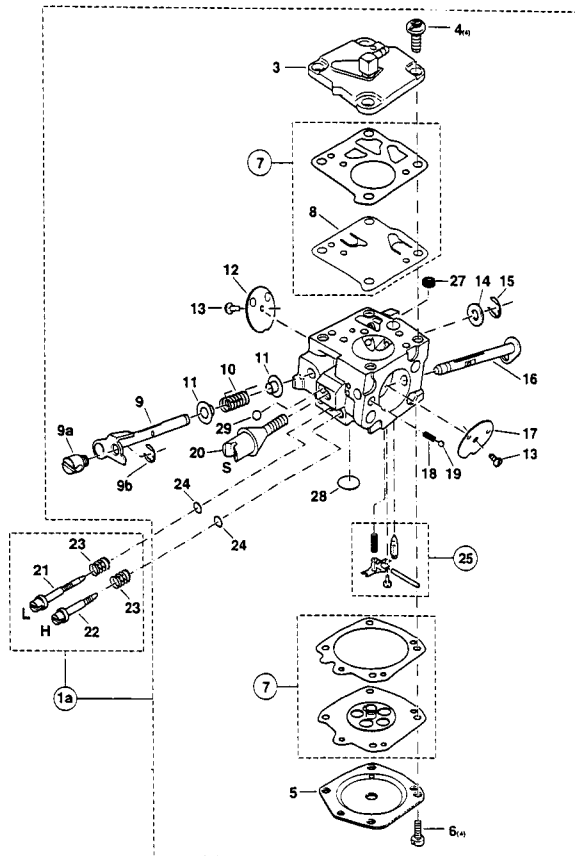
| Fig. | Part No. | Qty. Used | Description |
|------|-------------|-----------|-------------------------|
| 1 | 024-118-121 | 1 | HOOD |
| 3 | 908-305-255 | 3 | SCREWM5X10X25 |
| 5 | 024-118-111 | 1 | COVER ASSY. |
| 6 | 024-173-200 | 4 | NUT |
| 7 | 980-113-841 | 1 | LABEL |
| 9 | 024-173-081 | 1 | PRE-FILTER |
| 10 | 024-173-610 | 1 | COVERFORPRE-FILTER |
| 11 | 908-605-145 | 1 | SCREWM5X14 |
| 13a | 024-173-230 | 1 | AIRFILTER CPL. |
| 13b | 024-173-190 | 1 | AIRFILTER CPL. |
| 14 | 920-205-000 | 3 | HEXAGONAL NUT M5 |
| 15 | 928-105-000 | 2 | SAFETY WASHER |
| 16 | 024-173-160 | 1 | HOLDER FOR AIR FILTER |
| 17 | 024-150-170 | 1 | SHEET-METAL HOLDER |
| 18 | 024-131-031 | 1 | INSERT FOR SUCTION HOSE |
| 19 | 024-131-022 | 1 | SUCTION HOSE |
| 20 | 965-603-050 | 1 | CLAMP |
| 21 | 965-452-060 | 1 | VENTILATIONS LINE 160MM |
| 22 | 965-401-016 | 1 | RUBBER BUSH |
| 23 | 965-401-011 | 1 | RUBBER BUSH |
| 26 | 024-118-032 | 1 | BOTTOM |
| 28 | 908-005-165 | 4 | SCREWM5X16 |
| 29 | 024-118-051 | 1 | ADJUSTING GUIDE |
| 31 | 965-401-021 | 2 | RUBBER BUSH |
| 32 | 965-401-024 | 1 | RUBBER BUSH |
| 33 | 024-150-020 | 1 | CHOKE SHAFT |

6) Muffler



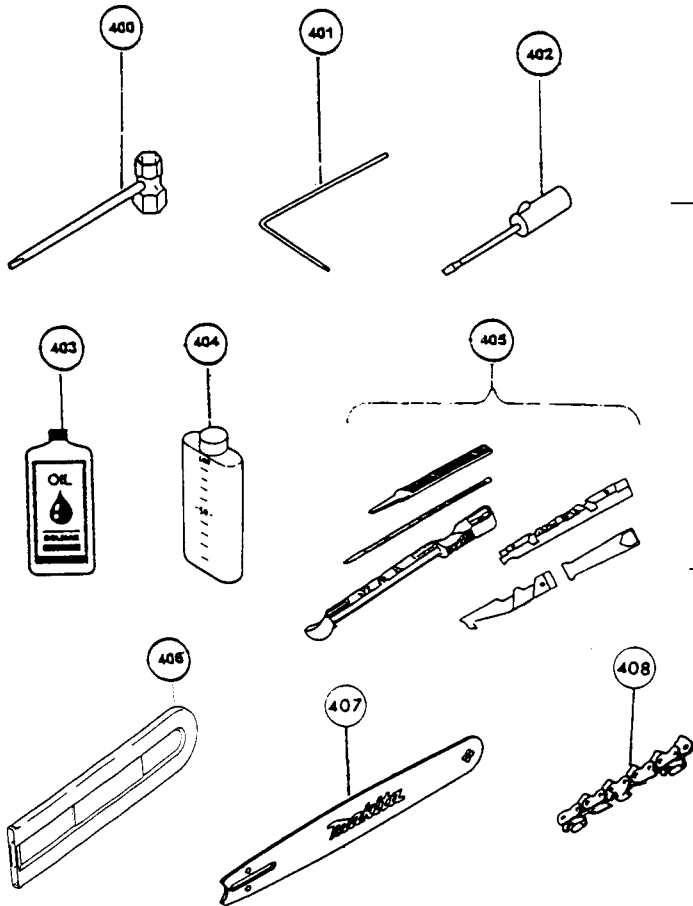
| Fig. | Part No. | Qty. Used | Description |
|------|-------------|-----------|-----------------|
| 1c | 024-174-153 | 1 | MUFFLER ASSY. |
| 2 | 024-174-020 | 3 | SPECIAL SCREWM6 |
| 3 | 965-525-101 | 1 | GASKET |
| 4 | 024-174-040 | 1 | COVER PLATE |
| 5 | 024-174-160 | 1 | SCREEN |
| 6 | 915-142-090 | 1 | SCREW 4.2X9.5 |
| 7b | 024-174-171 | 1 | DEFLECTOR PLATE |

7) Carburetor



| Fig. | Part No. | Qty. Used | Description |
|------|-------------|-----------|-------------------------|
| 1a | 024-150-010 | 1 | CARBURETOR |
| 3 | 024-150-160 | 1 | PUMP COVER CPL. |
| 4 | 394-150-170 | 4 | SCREW |
| 5 | 122-151-121 | 1 | DIAPHRAGM COVER |
| 6 | 001-150-520 | 4 | SCREW |
| 7 | 957-150-100 | 1 | SET DIAPHRAGM/GASKETS |
| 8 | 113-150-150 | 1 | PUMP DIAPHRAGM/RUBBER |
| 9 | 024-150-300 | 1 | THROTTLE SHAFT |
| 9a | 024-150-100 | 1 | HOLDER FOR BOWDEN CABLE |
| 9b | 024-150-110 | 1 | SAFETY WASHER |
| 10 | 001-150-310 | 1 | SPRING |
| 11 | 144-151-315 | 2 | BUSHING |
| 12 | 024-150-320 | 1 | THROTTLE SHUTTER |
| 13 | 001-150-650 | 2 | SCREW |
| 14 | 122-151-400 | 1 | DISC |
| 15 | 100-150-350 | 1 | SAFETY WASHER |
| 16 | 024-150-250 | 1 | CHOKE SHAFT |
| 17 | 113-150-261 | 1 | CHOKE SHUTTER |
| 18 | 101-150-080 | 1 | LOCKING SPRING |
| 19 | 113-150-380 | 1 | LOCKING BALL |
| 20 | 394-150-570 | 1 | IDLE STOP SCREW |
| 21 | 024-150-470 | 1 | IDLE ADJUSTMENT SCREW |
| 22 | 024-150-510 | 1 | MAIN ADJUSTMENT SCREW |
| 23 | 144-151-480 | 2 | SPRING |
| 24 | 394-150-500 | 2 | PACKING RING |
| 25 | 957-150-190 | 1 | SET OF CONTROL PARTS |
| 27 | 394-150-180 | 1 | SCREEN |
| 28 | 113-150-040 | 1 | COVER DISC |
| 29 | 001-150-510 | 1 | LOCKING BALL |

8) Accessories



| Fig. | Part No. | Qty. Used | Description |
|------|-------------|-----------|-------------------------|
| 400 | 941-719-171 | 1 | UNIVERSAL WRENCH |
| 401 | 940-827-000 | 1 | ANGLED SCREW DRIVER |
| 402 | 944-340-001 | 1 | SCREW DRIVER |
| 403 | 181115-A | 1 | ENGINE OIL |
| 404 | 181116-A | 1 | CHAIN BAR OIL |
| 405 | 744100-A | 1 | SHARPENING KIT 5/32" |
| 405 | 744101-A | 1 | SHARPENING KIT 7/32" |
| 406 | 952-100-171 | 1 | CHAIN PROTECTION 25-33" |
| 407 | 713204-A | 1 | 20" CHAIN BAR |
| 407 | 713205-A | 1 | 24" CHAIN BAR |
| 408 | 713104-A | 1 | 20" SAW CHAIN |
| 408 | 713105-A | 1 | 24" SAW CHAIN |